

For Research Use Only

# CPSF7 Recombinant antibody

Catalog Number: 85203-1-RR



## Basic Information

<b>Catalog Number:</b> 85203-1-RR	<b>GenBank Accession Number:</b> NM_001136040	<b>Purification Method:</b> Protein A purification
<b>Size:</b> 100ul , Concentration: 1000 ug/ml by Nanodrop;	<b>GeneID (NCBI):</b> 79869	<b>CloneNo.:</b> 242644E1
<b>Source:</b> Rabbit	<b>UNIPROT ID:</b> Q8N684	<b>Recommended Dilutions:</b> WB 1:500-1:1000 IF/ICC 1:250-1:1000
<b>Isotype:</b> IgG	<b>Full Name:</b> pre-mRNA cleavage factor I, 59 kDa subunit	
	<b>Calculated MW:</b> 56 kDa	
	<b>Observed MW:</b> 52 kDa	

## Applications

<b>Tested Applications:</b> WB, IF/ICC, ELISA	<b>Positive Controls:</b>
<b>Species Specificity:</b> human, mouse	<b>WB :</b> HeLa cells, HepG2 cells, HEK-293 cells, Jurkat cells, mouse uterus tissue
	<b>IF/ICC :</b> A431 cells,

## Background Information

CPSF7, also named as CPSF59, belongs to the RRM CPSF6/7 family. It probable component of the cleavage factor Im complex (CFIm) that plays a key role in pre-mRNA 3' processing. CPSF7 binds to cleavage and polyadenylation RNA substrates(PMID: 15489334). This antibody is specific to CPSF7.

## Storage

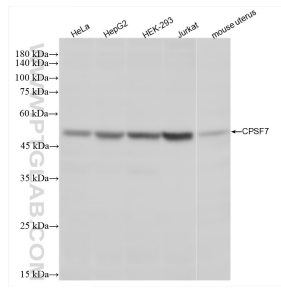
**Storage:**  
Store at -20°C. Stable for one year after shipment.  
**Storage Buffer:**  
PBS with 0.02% sodium azide and 50% glycerol pH 7.3.  
**Aliquoting is unnecessary for -20°C storage**

\*\*\* 20ul sizes contain 0.1% BSA

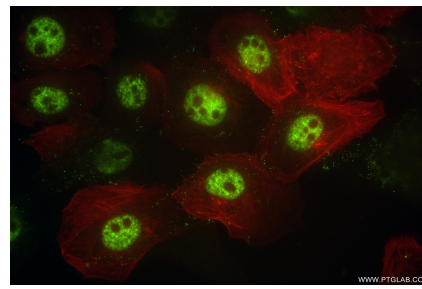
For technical support and original validation data for this product please contact:  
T: 1 (888) 4PTGLAB (1-888-478-4522) (toll free in USA), or 1(312) 455-8498 (outside USA)  
E: [proteintech@ptglab.com](mailto:proteintech@ptglab.com)  
W: [ptglab.com](http://ptglab.com)

This product is exclusively available under Proteintech Group brand and is not available to purchase from any other manufacturer.

## Selected Validation Data



Various lysates were subjected to SDS PAGE followed by western blot with 85203-1-RR (CPSF7 antibody) at dilution of 1:500 incubated at room temperature for 1.5 hours.



Immunofluorescent analysis of (4% PFA) fixed A431 cells using CPSF7 antibody (85203-1-RR, Clone: 242644E1 ) at dilution of 1:500 and CoraLite® 488-Conjugated Goat Anti-Rabbit IgG(H+L) (SA00013-2), CL594-Phalloidin (red).