

For Research Use Only

# CPSF7 Recombinant antibody, PBS Only (Detector)

Catalog Number: 85203-2-PBS



## Basic Information

<b>Catalog Number:</b> 85203-2-PBS	<b>GenBank Accession Number:</b> NM_001136040	<b>Purification Method:</b> Protein A purification
<b>Size:</b> 100ug , Concentration: 1 mg/ml by Nanodrop;	<b>GeneID (NCBI):</b> 79869	<b>CloneNo.:</b> 242644F11
<b>Source:</b> Rabbit	<b>UNIPROT ID:</b> Q8N684	
<b>Isotype:</b> IgG	<b>Full Name:</b> pre-mRNA cleavage factor I, 59 kDa subunit	
	<b>Calculated MW:</b> 56 kDa	

## Applications

**Tested Applications:**  
Sandwich ELISA, Indirect ELISA, Sample test

**Species Specificity:**  
human

## Product Information

85203-2-PBS targets CPSF7 as part of a matched antibody pair:

MP01956-1: 85203-1-PBS capture and 85203-2-PBS detection (validated in Sandwich ELISA)

Unconjugated rabbit recombinant monoclonal antibody in PBS only (BSA and azide free) storage buffer at a concentration of 1 mg/mL, ready for conjugation. Created using Proteintech's proprietary in-house recombinant technology. Recombinant production enables unrivalled batch-to-batch consistency, easy scale-up, and future security of supply.

This conjugation ready format makes antibodies ideal for use in many applications including: ELISAs, multiplex assays requiring matched pairs, mass cytometry, and multiplex imaging applications. Antibody use should be optimized by the end user for each application and assay.

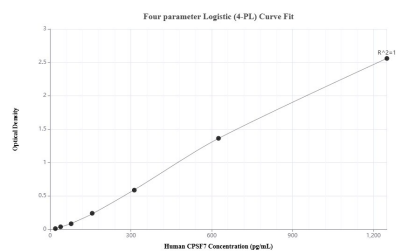
## Storage

**Storage:**  
Store at -80°C.  
**Storage Buffer:**  
PBS Only

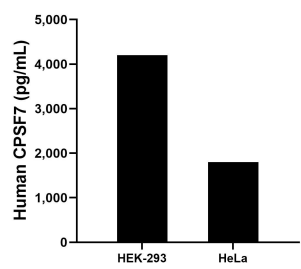
For technical support and original validation data for this product please contact:  
T: 1 (888) 4PTGLAB (1-888-478-4522) (toll free in USA), or 1(312) 455-8498 (outside USA)  
E: [proteintech@ptglab.com](mailto:proteintech@ptglab.com)  
W: [ptglab.com](http://ptglab.com)

This product is exclusively available under Proteintech Group brand and is not available to purchase from any other manufacturer.

## Selected Validation Data



Sandwich ELISA standard curve of MP01956-1, Human CPSF7 Recombinant Matched Antibody Pair - PBS only. 85203-1-PBS was coated to a plate as the capture antibody and incubated with serial dilutions of standard SY01255. 85203-2-PBS was HRP conjugated as the detection antibody. Range: 19.5-1250 pg/mL



The mean CPSF7 concentration was determined to be 4,199.1 pg/mL in HEK-293 cell extract based on a 2.7 mg/mL extract load and 1,800.3 pg/mL in HeLa cell extract based on a 1.5 mg/mL extract load.