

For Research Use Only

# CD40L/CD154 Recombinant antibody, PBS Only

Catalog Number: 85209-4-PBS



## Basic Information

Catalog Number:

85209-4-PBS

Size:

100ug, Concentration: 1 mg/ml by  
Nanodrop;

Source:

Rabbit

Isotype:

IgG

GenBank Accession Number:

BC071754

GeneID (NCBI):

959

UNIPROT ID:

P29965

Full Name:

CD40 ligand

Calculated MW:

261 aa, 29 kDa

Observed MW:

30 kDa

Purification Method:

Protein A purification

CloneNo.:

242847A5

## Applications

Tested Applications:

WB, Indirect ELISA

Species Specificity:

human

## Background Information

The CD40 ligand (CD40L, TRAP, CD154), a member of the TNF superfamily of ligands, is expressed as either a 33 kDa transmembrane homologue or an 18 kDa soluble form (sCD154). CD40L is primarily expressed on activated CD4+ T cells and a small proportion of CD8+ T cells and platelets. It binds to CD40 on antigen-presenting cells (APC), which leads to many effects depending on the target cell type. Recent studies have suggested that CD40/CD40L interactions regulate oxidative stress and affect various signaling pathways in both the immunological and the cardiovascular systems. The CD40/CD40L system is also involved in tumorigenesis.

## Storage

Storage:

Store at -80°C.

Storage Buffer:

PBS Only

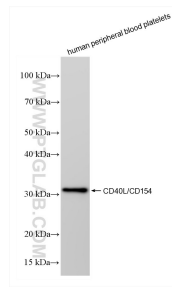
For technical support and original validation data for this product please contact:

T: 1 (888) 4PTGLAB (1-888-478-4522) (toll free  
in USA), or 1(312) 455-8498 (outside USA)

E: [proteintech@ptglab.com](mailto:proteintech@ptglab.com)  
W: [ptglab.com](http://ptglab.com)

This product is exclusively available under Proteintech Group brand and is not available to purchase from any other manufacturer.

## Selected Validation Data



human peripheral blood platelets were subjected to SDS PAGE followed by western blot with 85209-4-RR (CD40L/CD154 antibody) at dilution of 1:5000 incubated at room temperature for 1.5 hours. This data was developed using the same antibody clone with 85209-4-PBS in a different storage buffer formulation.