

For Research Use Only

# KCTD5 Recombinant antibody, PBS Only

Catalog Number: 85210-4-PBS



## Basic Information

**Catalog Number:**

85210-4-PBS

**Size:**

100ug , Concentration: 1 mg/ml by Nanodrop;

**Source:**

Rabbit

**Isotype:**

IgG

**Immunogen Catalog Number:**

AG7915

**GenBank Accession Number:**

BC007314

**GeneID (NCBI):**

54442

**UNIPROT ID:**

Q9NXV2

**Full Name:**

potassium channel tetramerisation domain containing 5

**Calculated MW:**

26 kDa

**Purification Method:**

Protein A purification

**CloneNo.:**

242864A11

## Applications

**Tested Applications:**

IF/ICC, Indirect ELISA

**Species Specificity:**

human

## Background Information

KCTD5 belongs to the human potassium (K<sup>+</sup>) channel tetramerization domain (KCTD) family of proteins which share sequence similarity with the cytoplasmic domain of voltage-gated K<sup>+</sup> channels (Kv channels). The KCTD proteins have relatively conserved N-terminal domains and variable C-termini (PMID: 24268103). KCTD5 interacts with cullin3 and has been proposed to function as substrate adapter for cullin3 based ubiquitin E3 ligases (PMID: 26188516).

## Storage

**Storage:**

Store at -80°C.

**Storage Buffer:**

PBS Only

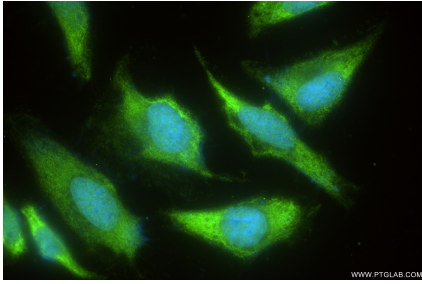
For technical support and original validation data for this product please contact:

T: 1 (888) 4PTGLAB (1-888-478-4522) (toll free in USA), or 1(312) 455-8498 (outside USA)

E: [proteintech@ptglab.com](mailto:proteintech@ptglab.com)  
W: [ptglab.com](http://ptglab.com)

This product is exclusively available under Proteintech Group brand and is not available to purchase from any other manufacturer.

## Selected Validation Data



Immunofluorescent analysis of (-20°C Ethanol) fixed HeLa cells using KCTD5 antibody (85210-4-RR, Clone: 242864A11 ) at dilution of 1:400 and CoraLite®488-Conjugated Goat Anti-Rabbit IgG(H+L) (SA00013-2). This data was developed using the same antibody clone with 85210-4-PBS in a different storage buffer formulation.