

For Research Use Only

KCTD5 Recombinant antibody

Catalog Number: 85210-4-RR



Basic Information

Catalog Number: 85210-4-RR	GenBank Accession Number: BC007314	Purification Method: Protein A purification
Size: 100ul , Concentration: 1000 µg/ml by Nanodrop;	GeneID (NCBI): 54442	CloneNo.: 242864A11
Source: Rabbit	UNIPROT ID: Q9NXV2	Recommended Dilutions: IF/ICC 1:200-1:800
Isotype: IgG	Full Name: potassium channel tetramerisation domain containing 5	
Immunogen Catalog Number: AG7915	Calculated MW: 26 kDa	

Applications

Tested Applications: IF/ICC, ELISA	Positive Controls: IF/ICC : HeLa cells,
Species Specificity: human	

Background Information

KCTD5 belongs to the human potassium (K⁺) channel tetramerization domain (KCTD) family of proteins which share sequence similarity with the cytoplasmic domain of voltage-gated K⁺ channels (Kv channels). The KCTD proteins have relatively conserved N-terminal domains and variable C-termini (PMID: 24268103). KCTD5 interacts with cullin3 and has been proposed to function as substrate adapter for cullin3 based ubiquitin E3 ligases (PMID: 26188516).

Storage

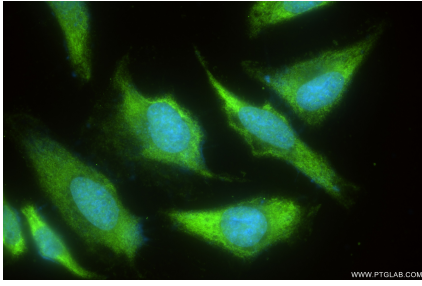
Storage:
Store at -20°C. Stable for one year after shipment.
Storage Buffer:
PBS with 0.02% sodium azide and 50% glycerol pH 7.3.
Aliquoting is unnecessary for -20°C storage

*** 20ul sizes contain 0.1% BSA

For technical support and original validation data for this product please contact:
T: 1 (888) 4PTGLAB (1-888-478-4522) (toll free in USA), or 1(312) 455-8498 (outside USA)
E: proteintech@ptglab.com
W: ptglab.com

This product is exclusively available under Proteintech Group brand and is not available to purchase from any other manufacturer.

Selected Validation Data



Immunofluorescent analysis of (-20°C Ethanol) fixed HeLa cells using KCTD5 antibody (85210-4-RR, Clone: 242864A11) at dilution of 1:400 and CoraLite®488-Conjugated Goat Anti-Rabbit IgG(H+L) (SA00013-2).