

For Research Use Only

# KCTD5 Recombinant antibody, PBS Only

Catalog Number: 85210-5-PBS



## Basic Information

<b>Catalog Number:</b> 85210-5-PBS	<b>GenBank Accession Number:</b> BC007314	<b>Purification Method:</b> Protein A purification
<b>Size:</b> 100ug , Concentration: 1 mg/ml by Nanodrop;	<b>GeneID (NCBI):</b> 54442	<b>CloneNo.:</b> 242864E2
<b>Source:</b> Rabbit	<b>UNIPROT ID:</b> Q9NXV2	
<b>Isotype:</b> IgG	<b>Full Name:</b> potassium channel tetramerisation domain containing 5	
<b>Immunogen Catalog Number:</b> AG7915	<b>Calculated MW:</b> 26 kDa	
	<b>Observed MW:</b> 27 kDa	

## Applications

**Tested Applications:**  
WB, Indirect ELISA

**Species Specificity:**  
human, mouse, rat

## Background Information

KCTD5 belongs to the human potassium (K<sup>+</sup>) channel tetramerization domain (KCTD) family of proteins which share sequence similarity with the cytoplasmic domain of voltage-gated K<sup>+</sup> channels (Kv channels). The KCTD proteins have relatively conserved N-terminal domains and variable C-termini (PMID: 24268103). KCTD5 interacts with cullin3 and has been proposed to function as substrate adapter for cullin3 based ubiquitin E3 ligases (PMID: 26188516).

## Storage

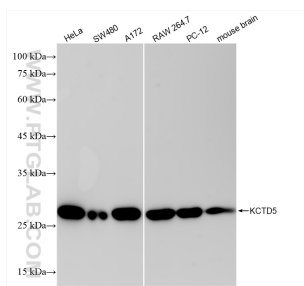
**Storage:**  
Store at -80°C.

**Storage Buffer:**  
PBS only, pH7.3

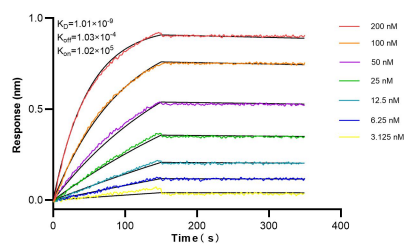
For technical support and original validation data for this product please contact:  
T: 1 (888) 4PTGLAB (1-888-478-4522) (toll free in USA), or 1(312) 455-8498 (outside USA)  
E: [proteintech@ptglab.com](mailto:proteintech@ptglab.com)  
W: [ptglab.com](http://ptglab.com)

This product is exclusively available under Proteintech Group brand and is not available to purchase from any other manufacturer.

## Selected Validation Data



Various lysates were subjected to SDS PAGE followed by western blot with 85210-5-RR (KCTD5 antibody) at dilution of 1:10000 incubated at room temperature for 1.5 hours. This data was developed using the same antibody clone with 85210-5-PBS in a different storage buffer formulation.



Biolayer interferometry (BLI) kinetic assays of 85210-5-RR against Human KCTD5 were performed. The affinity constant is 1.01 nM.