

For Research Use Only

KCTD5 Recombinant antibody

Catalog Number: 85210-5-RR



Basic Information

Catalog Number:

85210-5-RR

Size:

100ul, Concentration: 1000 µg/ml by
Nanodrop;

Source:

Rabbit

Isotype:

IgG

Immunogen Catalog Number:

AG7915

GenBank Accession Number:

BC007314

GeneID (NCBI):

54442

UNIPROT ID:

Q9NXV2

Full Name:

potassium channel tetramerisation
domain containing 5

Calculated MW:

26 kDa

Observed MW:

27 kDa

Purification Method:

Protein A purification

CloneNo.:

242864E2

Recommended Dilutions:

WB 1:5000-1:50000

Applications

Tested Applications:

WB, ELISA

Species Specificity:

human, mouse, rat

Positive Controls:

WB : HeLa cells, SW480 cells, A172 cells, RAW 264.7
cells, PC-12 cells, mouse brain tissue

Background Information

KCTD5 belongs to the human potassium (K⁺) channel tetramerization domain (KCTD) family of proteins which share sequence similarity with the cytoplasmic domain of voltage-gated K⁺ channels (Kv channels). The KCTD proteins have relatively conserved N-terminal domains and variable C-termini (PMID: 24268103). KCTD5 interacts with cullin3 and has been proposed to function as substrate adapter for cullin3 based ubiquitin E3 ligases (PMID: 26188516).

Storage

Storage:

Store at -20°C. Stable for one year after shipment.

Storage Buffer:

PBS with 0.02% sodium azide and 50% glycerol, pH7.3

Aliquoting is unnecessary for -20°C storage

*** 20ul sizes contain 0.1% BSA

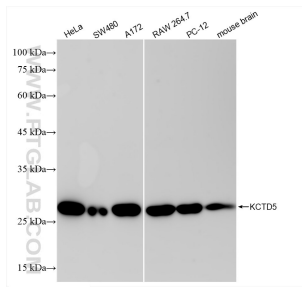
For technical support and original validation data for this product please contact:

T: 1 (888) 4PTGLAB (1-888-478-4522) (toll free
in USA), or 1(312) 455-8498 (outside USA)

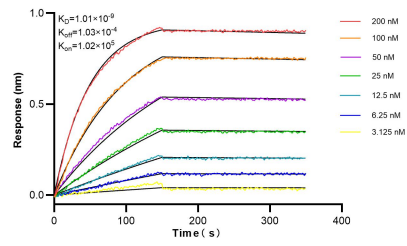
E: proteintech@ptglab.com
W: ptglab.com

This product is exclusively available under Proteintech
Group brand and is not available to purchase from any
other manufacturer.

Selected Validation Data



Various lysates were subjected to SDS PAGE followed by western blot with 85210-5-RR (KCTD5 antibody) at dilution of 1:10000 incubated at room temperature for 1.5 hours.



Biolayer interferometry (BLI) kinetic assays of 85210-5-RR against Human KCTD5 were performed. The affinity constant is 1.01 nM.