

For Research Use Only

# PPME1 Recombinant antibody, PBS Only

Catalog Number: 85221-5-PBS



## Basic Information

Catalog Number:

85221-5-PBS

Size:

100ug, Concentration: 1 mg/ml by Nanodrop;

Source:

Rabbit

Isotype:

IgG

Immunogen Catalog Number:

AG5817

GenBank Accession Number:

BC050705

GeneID (NCBI):

51400

UNIPROT ID:

Q9Y570

Full Name:

protein phosphatase methyltransferase 1

Calculated MW:

42 kDa

Observed MW:

44 kDa

Purification Method:

Protein A purification

CloneNo.:

242929H5

## Applications

Tested Applications:

WB, Indirect ELISA

Species Specificity:

human, mouse, rat

## Background Information

PPME1 (Protein phosphatase methyltransferase 1) is a protein phosphatase 2A (PP2A)-specific methyl transferase that negatively regulates PP2A through demethylation at its carboxy terminal leucine 309 residue (PMID: 24253382). PPME1 plays an important role in the development of cancers and may be a biomarker for pancreatic carcinoma, gastric and lung cancer (PMID: 32351291).

## Storage

Storage:

Store at -80°C.

Storage Buffer:

PBS Only

For technical support and original validation data for this product please contact:

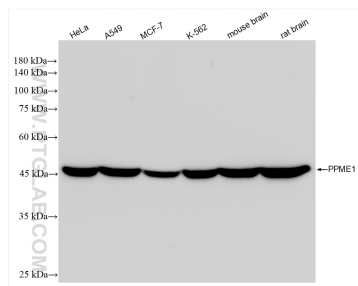
T: 1 (888) 4PTGLAB (1-888-478-4522) (toll free in USA), or 1(312) 455-8498 (outside USA)

E: [proteintech@ptglab.com](mailto:proteintech@ptglab.com)

W: [ptglab.com](http://ptglab.com)

This product is exclusively available under Proteintech Group brand and is not available to purchase from any other manufacturer.

## Selected Validation Data



Various lysates were subjected to SDS PAGE followed by western blot with 85221-5-RR (PPME1 antibody) at dilution of 1:5000 incubated at room temperature for 1.5 hours. This data was developed using the same antibody clone with 85221-5-PBS in a different storage buffer formulation.