

For Research Use Only

# PPME1 Recombinant antibody

Catalog Number: 85221-5-RR



## Basic Information

<b>Catalog Number:</b> 85221-5-RR	<b>GenBank Accession Number:</b> BC050705	<b>Purification Method:</b> Protein A purification
<b>Size:</b> 100ul , Concentration: 1000 µg/ml by Nanodrop;	<b>GeneID (NCBI):</b> 51400	<b>CloneNo.:</b> 242929H5
<b>Source:</b> Rabbit	<b>UNIPROT ID:</b> Q9Y570	<b>Recommended Dilutions:</b> WB 1:2000-1:10000
<b>Isotype:</b> IgG	<b>Full Name:</b> protein phosphatase methyltransferase 1	
<b>Immunogen Catalog Number:</b> AG5817	<b>Calculated MW:</b> 42 kDa	
	<b>Observed MW:</b> 44 kDa	

## Applications

<b>Tested Applications:</b> WB, ELISA	<b>Positive Controls:</b> WB : HeLa cells, A549 cells, MCF-7 cells, K-562 cells, mouse brain tissue, rat brain tissue
<b>Species Specificity:</b> human, mouse, rat	

## Background Information

PPME1 (Protein phosphatase methyltransferase 1) is a protein phosphatase 2A (PP2A)-specific methyl transferase that negatively regulates PP2A through demethylation at its carboxy terminal leucine 309 residue (PMID: 24253382). PPME1 plays an important role in the development of cancers and may be a biomarker for pancreatic carcinoma, gastric and lung cancer (PMID: 32351291).

## Storage

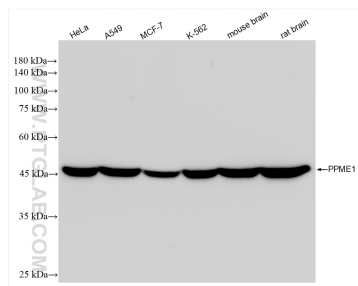
**Storage:**  
Store at -20°C. Stable for one year after shipment.  
**Storage Buffer:**  
PBS with 0.02% sodium azide and 50% glycerol pH 7.3.  
Aliquoting is unnecessary for -20°C storage

\*\*\* 20ul sizes contain 0.1% BSA

For technical support and original validation data for this product please contact:  
T: 1 (888) 4PTGLAB (1-888-478-4522) (toll free in USA), or 1(312) 455-8498 (outside USA)  
E: proteintech@ptglab.com  
W: ptglab.com

This product is exclusively available under Proteintech Group brand and is not available to purchase from any other manufacturer.

## Selected Validation Data



Various lysates were subjected to SDS PAGE followed by western blot with 85221-5-RR (PPME1 antibody) at dilution of 1:5000 incubated at room temperature for 1.5 hours.