

For Research Use Only

# Phospho-Cyclin D1 (Thr286) Recombinant monoclonal antibody, PBS Only

Catalog Number: 85246-1-PBS



## Basic Information

<b>Catalog Number:</b> 85246-1-PBS	<b>GenBank Accession Number:</b> BC000076	<b>Purification Method:</b> Protein A purification
<b>Size:</b> 100ug , Concentration: 1 mg/ml by Nanodrop;	<b>GeneID (NCBI):</b> 595	<b>CloneNo.:</b> 242211A1
<b>Source:</b> Rabbit	<b>UNIPROT ID:</b> P24385	
<b>Isotype:</b> IgG	<b>Full Name:</b> cyclin D1	
	<b>Calculated MW:</b> 295 aa, 34 kDa	
	<b>Observed MW:</b> 34 kDa	

## Applications

**Tested Applications:**  
WB, Indirect ELISA

**Species Specificity:**  
human, rat

## Background Information

Cyclin D1 is an important regulator of G1-S phase cell cycle transition. Active cyclin D1-cyclin dependent kinase 4/6 complexes phosphorylate retinoblastoma protein, resulting in release of sequestered E2F transcription factors and subsequent expression of genes required for progression into S phase. Cyclin D1 was localized to the nucleus and its rapid ubiquitin-dependent degradation shown to require phosphorylation at Thr286 by glycogen synthase kinase 3 $\beta$  (GSK3 $\beta$ ). (PMID: 16504004)

## Storage

**Storage:**  
Store at -80°C.

**Storage Buffer:**  
PBS only, pH7.3

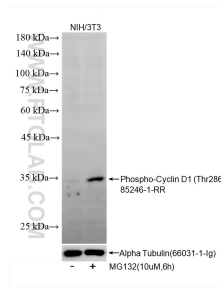
For technical support and original validation data for this product please contact:

T: 1 (888) 4PTGLAB (1-888-478-4522) (toll free  
in USA), or 1(312) 455-8498 (outside USA)

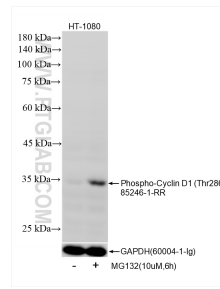
E: [proteintech@ptglab.com](mailto:proteintech@ptglab.com)  
W: [ptglab.com](http://ptglab.com)

**This product is exclusively available under Proteintech Group brand and is not available to purchase from any other manufacturer.**

## Selected Validation Data



Non-treated NIH/3T3 cells and MG132 treated NIH/3T3 cells were subjected to SDS PAGE followed by western blot with 85246-1-RR (Cyclin D1 antibody) at dilution of 1:10000 incubated at room temperature for 1.5 hours. The membrane was stripped and re-blotted with Alpha Tubulin (66031-1-Ig) antibody as a loading control. This data was developed using the same antibody clone with 85246-1-PBS in a different storage buffer formulation.



Non-treated HT-1080 cells and MG132 treated HT-1080 cells were subjected to SDS PAGE followed by western blot with 85246-1-RR (Phospho-Cyclin D1 (Thr286) antibody) at dilution of 1:5000 incubated at room temperature for 1.5 hours. The membrane was stripped and re-blotted with GAPDH (60004-1-Ig) antibody as a loading control. This data was developed using the same antibody clone with 85246-1-PBS in a different storage buffer formulation.