

For Research Use Only

Phospho-Cyclin D1 (Thr286) Recombinant monoclonal antibody

Catalog Number: 85246-1-RR



Basic Information

Catalog Number: 85246-1-RR	GenBank Accession Number: BC000076	Purification Method: Protein A purification
Size: 100ul , Concentration: 1000 µg/ml by Nanodrop;	GeneID (NCBI): 595	CloneNo.: 242211A1
Source: Rabbit	UNIPROT ID: P24385	Recommended Dilutions: WB: 1:2000-1:10000
Isotype: IgG	Full Name: cyclin D1	
	Calculated MW: 295 aa, 34 kDa	
	Observed MW: 34 kDa	

Applications

Tested Applications: WB, ELISA	Positive Controls: WB : MG132 treated HT-1080 cells, MG132 treated NIH/3T3 cells
Species Specificity: human, rat	

Background Information

Cyclin D1 is an important regulator of G1-S phase cell cycle transition. Active cyclin D1-cyclin dependent kinase 4/6 complexes phosphorylate retinoblastoma protein, resulting in release of sequestered E2F transcription factors and subsequent expression of genes required for progression into S phase. Cyclin D1 was localized to the nucleus and its rapid ubiquitin-dependent degradation shown to require phosphorylation at Thr286 by glycogen synthase kinase 3β (GSK3β). (PMID: 16504004)

Storage

Storage:
Store at -20°C. Stable for one year after shipment.
Storage Buffer:
PBS with 0.02% sodium azide and 50% glycerol, pH7.3
Aliquoting is unnecessary for -20°C storage

*** 20ul sizes contain 0.1% BSA

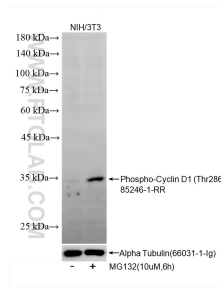
For technical support and original validation data for this product please contact:

T: 1 (888) 4PTGLAB (1-888-478-4522) (toll free
in USA), or 1(312) 455-8498 (outside USA)

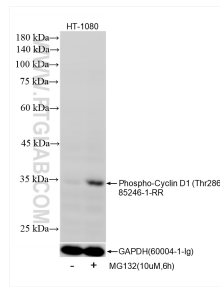
E: proteintech@ptglab.com
W: ptglab.com

This product is exclusively available under Proteintech Group brand and is not available to purchase from any other manufacturer.

Selected Validation Data



Non-treated NIH/3T3 cells and MG132 treated NIH/3T3 cells were subjected to SDS PAGE followed by western blot with 85246-1-RR (Cyclin D1 antibody) at dilution of 1:10000 incubated at room temperature for 1.5 hours. The membrane was stripped and re-blotted with Alpha Tubulin (66031-1-Ig) antibody as a loading control.



Non-treated HT-1080 cells and MG132 treated HT-1080 cells were subjected to SDS PAGE followed by western blot with 85246-1-RR (Phospho-Cyclin D1 (Thr286) antibody) at dilution of 1:5000 incubated at room temperature for 1.5 hours. The membrane was stripped and re-blotted with GAPDH (60004-1-Ig) antibody as a loading control.