

For Research Use Only

COL4A1 Recombinant antibody, PBS Only (Detector)

Catalog Number: 85256-2-PBS



Basic Information

Catalog Number: 85256-2-PBS	GenBank Accession Number: BC151220	Purification Method: Protein A purification
Size: 100ug , Concentration: 1 mg/ml by Nanodrop;	GeneID (NCBI): 1282	CloneNo.: 251500C1
Source: Rabbit	UNIPROT ID: P02462	
Isotype: IgG	Full Name: collagen, type IV, alpha 1	
Immunogen Catalog Number: AG34391	Calculated MW: 1669 aa, 161 kDa	

Applications

Tested Applications:
Cytometric bead array, Indirect ELISA, Sample test

Species Specificity:
human

Product Information

85256-2-PBS targets COL4A1 as part of a matched antibody pair:

MP02536-1: 85256-3-PBS capture and 85256-2-PBS detection (validated in Cytometric bead array)

Unconjugated rabbit recombinant monoclonal antibody in PBS only (BSA and azide free) storage buffer at a concentration of 1 mg/mL, ready for conjugation. Created using Proteintech's proprietary in-house recombinant technology. Recombinant production enables unrivalled batch-to-batch consistency, easy scale-up, and future security of supply.

This conjugation ready format makes antibodies ideal for use in many applications including: ELISAs, multiplex assays requiring matched pairs, mass cytometry, and multiplex imaging applications. Antibody use should be optimized by the end user for each application and assay.

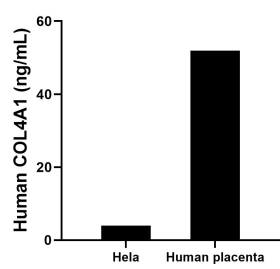
Storage

Storage:
Store at -80°C.
Storage Buffer:
PBS only, pH7.3

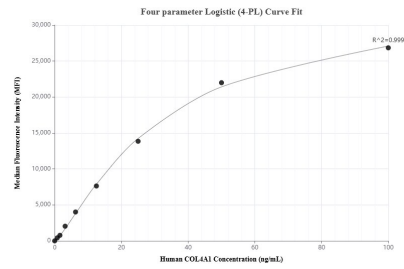
For technical support and original validation data for this product please contact:
T: 1 (888) 4PTGLAB (1-888-478-4522) (toll free in USA), or 1(312) 455-8498 (outside USA)
E: proteintech@ptglab.com
W: ptglab.com

This product is exclusively available under Proteintech Group brand and is not available to purchase from any other manufacturer.

Selected Validation Data



The mean COL4A1 concentration was determined to be 4.0 ng/mL in Hela cell extract based on a 1.1 mg/mL extract load, 51.9 ng/mL in Human placenta tissue extract based on a 3.2 mg/mL extract load.



Cytometric bead array standard curve of MP02536-1, COL4A1 Recombinant Matched Antibody Pair, PBS Only. Capture antibody: 85256-3-PBS. Detection antibody: 85256-2-PBS. Standard: Ag34391. Range: 0.781-100 ng/mL