

For Research Use Only

SCN9A Recombinant monoclonal antibody, PBS Only (Capture)

Catalog Number: 85279-5-PBS



Basic Information

Catalog Number: 85279-5-PBS	GenBank Accession Number: NM_001365536.1	Purification Method: Protein A purification
Size: 100ug , Concentration: 1 mg/ml by Nanodrop;	GeneID (NCBI): 6335	CloneNo.: 242997H1
Source: Rabbit	UNIPROT ID: Q15858-1	
Isotype: IgG	Full Name: sodium channel, voltage-gated, type IX, alpha subunit	
	Calculated MW: 226 kDa	

Applications

Tested Applications:
Sandwich ELISA, Indirect ELISA

Species Specificity:
human

Product Information

85279-5-PBS targets SCN9A as part of a matched antibody pair:

MP02070-3: 85279-5-PBS capture and 85279-2-PBS detection (validated in Sandwich ELISA)

Unconjugated rabbit recombinant monoclonal antibody in PBS only (BSA and azide free) storage buffer at a concentration of 1 mg/mL, ready for conjugation. Created using Proteintech's proprietary in-house recombinant technology. Recombinant production enables unrivalled batch-to-batch consistency, easy scale-up, and future security of supply.

This conjugation ready format makes antibodies ideal for use in many applications including: ELISAs, multiplex assays requiring matched pairs, mass cytometry, and multiplex imaging applications. Antibody use should be optimized by the end user for each application and assay.

Storage

Storage:
Store at -80°C.

Storage Buffer:
PBS only, pH7.3

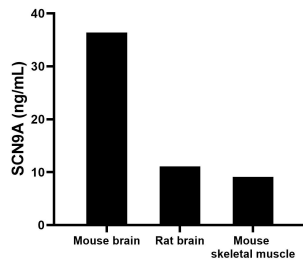
For technical support and original validation data for this product please contact:

T: 1 (888) 4PTGLAB (1-888-478-4522) (toll free in USA), or 1(312) 455-8498 (outside USA)

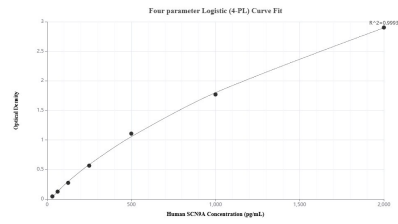
E: proteintech@ptglab.com
W: ptglab.com

This product is exclusively available under Proteintech Group brand and is not available to purchase from any other manufacturer.

Selected Validation Data



The mean SCN9A concentration was determined to be 36.40 ng/mL in mouse brain tissue extract based on a 6.3 mg/mL extract load, 11.10 ng/mL in rat brain tissue extract based on a 3.9 mg/mL extract load and 9.10 ng/mL in mouse skeletal muscle tissue extract based on a 4.1 mg/mL extract load.



Sandwich ELISA standard curve of MP02070-3, Human SCN9A Recombinant Matched Antibody Pair - PBS only. 85279-5-PBS was coated to a plate as the capture antibody and incubated with serial dilutions of standard SY02473. 85279-2-PBS was HRP conjugated as the detection antibody. Range: 31.3-2000 pg/mL