

For Research Use Only

NID2 Recombinant monoclonal antibody, PBS Only (Detector)

Catalog Number:85299-2-PBS



Basic Information

Catalog Number: 85299-2-PBS	GenBank Accession Number: BC035608	Purification Method: Protein A purification
Size: 100ug , Concentration: 1 mg/ml by Nanodrop;	GeneID (NCBI): 22795	CloneNo.: 252350B10
Source: Rabbit	UNIPROT ID: Q14112	
Isotype: IgG	Full Name: nidogen 2 (osteonidogen)	
Immunogen Catalog Number: AG4643	Calculated MW: 1375 aa, 151 kDa	

Applications

Tested Applications:
Cytometric bead array, Indirect ELISA

Species Specificity:
human

Product Information

85299-2-PBS targets NID2 as part of a matched antibody pair:

MP02894-1: 85299-3-PBS capture and 85299-2-PBS detection (validated in Cytometric bead array)

Unconjugated rabbit recombinant monoclonal antibody in PBS only (BSA and azide free) storage buffer at a concentration of 1 mg/mL, ready for conjugation. Created using Proteintech's proprietary in-house recombinant technology. Recombinant production enables unrivalled batch-to-batch consistency, easy scale-up, and future security of supply.

This conjugation ready format makes antibodies ideal for use in many applications including: ELISAs, multiplex assays requiring matched pairs, mass cytometry, and multiplex imaging applications. Antibody use should be optimized by the end user for each application and assay.

Storage

Storage:
Store at -80°C.

Storage Buffer:
PBS only, pH7.3

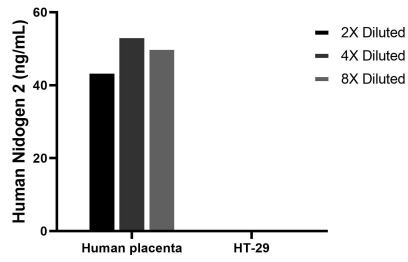
For technical support and original validation data for this product please contact:

T: 1 (888) 4PTGLAB (1-888-478-4522) (toll free in USA), or 1(312) 455-8498 (outside USA)

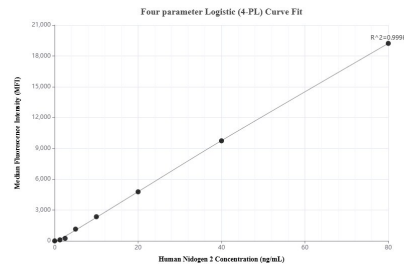
E: proteintech@ptglab.com
W: ptglab.com

This product is exclusively available under Proteintech Group brand and is not available to purchase from any other manufacturer.

Selected Validation Data



The mean Nidogen 2 concentration was determined to be 49.3 ng/mL in human placenta cell extract based on a 3.2 mg/mL extract load, HT-29 cell extract were served as a negative control.



Cytometric bead array standard curve of MP02894-1, Nidogen 2 Recombinant Matched Antibody Pair, PBS Only. Capture antibody: 85299-3-PBS. Detection antibody: 85299-2-PBS. Standard: Ag4643. Range: 1.25-80 ng/mL.