

For Research Use Only

CYP4F2-Specific Recombinant antibody

Catalog Number: 85320-1-RR



Basic Information

Catalog Number:

85320-1-RR

Size:

100ul, Concentration: 1000 µg/ml by Nanodrop;

Source:

Rabbit

Isotype:

IgG

GenBank Accession Number:

NM_001082

GeneID (NCBI):

8529

UNIPROT ID:

P78329

Full Name:

cytochrome P450, family 4, subfamily F, polypeptide 2

Calculated MW:

60 kDa

Observed MW:

50-53 kDa

Purification Method:

Protein A purification

CloneNo.:

242307B10

Recommended Dilutions:

WB 1:5000-1:50000

Applications

Tested Applications:

WB, ELISA

Species Specificity:

human, mouse

Positive Controls:

WB : HeLa cells, L02 cells, A549 cells, HuH-7 cells, SMMC-7721 cells, mouse liver tissue

Background Information

CYP4F2, also named as CPF2, belongs to the cytochrome P450 family. Cytochromes P450 are a group of heme-thiolate monooxygenases. In liver microsomes, CYP4F2 is involved in an NADPH-dependent electron transport pathway. It oxidizes a variety of structurally unrelated compounds, including steroids, fatty acids, and xenobiotics. This antibody is specific to CYP4F2 with an observed molecular weight of 50-53 kDa (PMID: 17341693, PMID: 37121548).

Storage

Storage:

Store at -20°C. Stable for one year after shipment.

Storage Buffer:

PBS with 0.02% sodium azide and 50% glycerol pH 7.3.

Aliquoting is unnecessary for -20°C storage

*** 20ul sizes contain 0.1% BSA

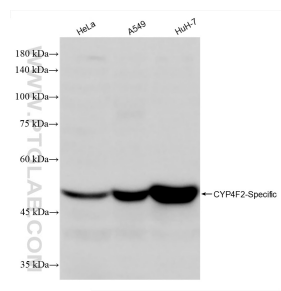
For technical support and original validation data for this product please contact:

T: 1 (888) 4PTGLAB (1-888-478-4522) (toll free in USA), or 1(312) 455-8498 (outside USA)

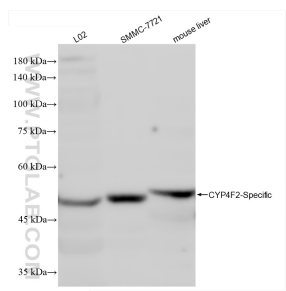
E: proteintech@ptglab.com
W: ptglab.com

This product is exclusively available under Proteintech Group brand and is not available to purchase from any other manufacturer.

Selected Validation Data



Various lysates were subjected to SDS PAGE followed by western blot with 85320-1-RR (CYP4F2-Specific antibody) at dilution of 1:10000 incubated at room temperature for 1.5 hours.



Various lysates were subjected to SDS PAGE followed by western blot with 85320-1-RR (CYP4F2-Specific antibody) at dilution of 1:10000 incubated at room temperature for 1.5 hours.