

For Research Use Only

MRPL3 Recombinant antibody, PBS Only

Catalog Number: 85327-1-PBS



Basic Information

Catalog Number:

85327-1-PBS

Size:

100ug , Concentration: 1 mg/ml by Nanodrop;

Source:

Rabbit

Isotype:

IgG

Immunogen Catalog Number:

AG9970

GenBank Accession Number:

BC003375

GeneID (NCBI):

11222

UNIPROT ID:

P09001

Full Name:

mitochondrial ribosomal protein L3

Calculated MW:

39 kDa

Observed MW:

35-39 kDa

Purification Method:

Protein A purification

CloneNo.:

242401G9

Applications

Tested Applications:

WB, Indirect ELISA

Species Specificity:

human

Background Information

MRPL3, also named as 39S ribosomal protein L3, mitochondrial or RPML3, is a 348 amino acid protein, which belongs to the ribosomal protein L3P family. MRPL3 localizes in the Mitochondrion and has an association with combined oxidative phosphorylation deficiency 9. MRPL3 plays role in the mitochondrial proteins biosynthesis and ribosomal structure and biogenesis.

Storage

Storage:

Store at -80°C.

Storage Buffer:

PBS Only

For technical support and original validation data for this product please contact:

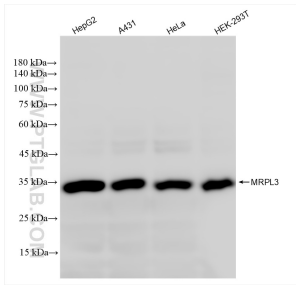
T: 1 (888) 4PTGLAB (1-888-478-4522) (toll free in USA), or 1(312) 455-8498 (outside USA)

E: proteintech@ptglab.com

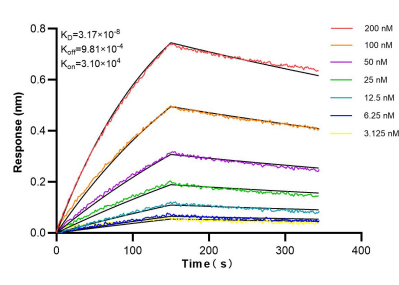
W: ptglab.com

This product is exclusively available under Proteintech Group brand and is not available to purchase from any other manufacturer.

Selected Validation Data



Various lysates were subjected to SDS PAGE followed by western blot with 85327-1-RR (MRPL3 antibody) at dilution of 1:10000 incubated at room temperature for 1.5 hours. This data was developed using the same antibody clone with 85327-1-PBS in a different storage buffer formulation.



Biolayer interferometry (BLI) kinetic assays of 85327-1-RR against Human MRPL3 were performed. The affinity constant is 31.7 nM.