

For Research Use Only

# SLC25A19 Recombinant antibody, PBS Only

Catalog Number: 85331-1-PBS



## Basic Information

**Catalog Number:**

85331-1-PBS

**Size:**

100ug , Concentration: 1 mg/ml by Nanodrop;

**Source:**

Rabbit

**Isotype:**

IgG

**Immunogen Catalog Number:**

AG6835

**GenBank Accession Number:**

BC001075

**GeneID (NCBI):**

60386

**UNIPROT ID:**

Q9HC21

**Full Name:**

solute carrier family 25 (mitochondrial thiamine pyrophosphate carrier), member 19

**Calculated MW:**

36 kDa

**Observed MW:**

37 kDa

**Purification Method:**

Protein A purification

**CloneNo.:**

242441B3

## Applications

**Tested Applications:**

WB, Indirect ELISA

**Species Specificity:**

human, mouse, rat

## Storage

**Storage:**

Store at -80°C.

**Storage Buffer:**

PBS Only

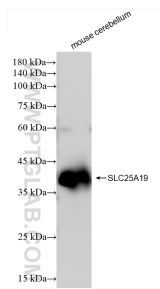
For technical support and original validation data for this product please contact:

T: 1 (888) 4PTGLAB (1-888-478-4522) (toll free in USA), or 1(312) 455-8498 (outside USA)

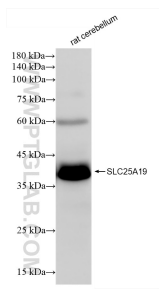
E: [proteintech@ptglab.com](mailto:proteintech@ptglab.com)  
W: [ptglab.com](http://ptglab.com)

This product is exclusively available under Proteintech Group brand and is not available to purchase from any other manufacturer.

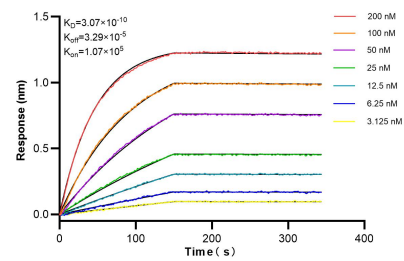
## Selected Validation Data



mouse cerebellum tissue were subjected to SDS PAGE followed by western blot with 85331-1-RR (SLC25A19 antibody) at dilution of 1:10000 incubated at room temperature for 1.5 hours. This data was developed using the same antibody clone with 85331-1-PBS in a different storage buffer formulation.



rat cerebellum tissue were subjected to SDS PAGE followed by western blot with 85331-1-RR (SLC25A19 antibody) at dilution of 1:10000 incubated at room temperature for 1.5 hours. This data was developed using the same antibody clone with 85331-1-PBS in a different storage buffer formulation.



Biolayer interferometry (BLI) kinetic assays of 85331-1-RR against Human SLC25A19 were performed. The affinity constant is 0.307 nM.