

For Research Use Only

SLC25A19 Recombinant antibody

Catalog Number: 85331-1-RR



Basic Information

Catalog Number:

85331-1-RR

Size:

100ul, Concentration: 1000 ug/ml by
Nanodrop;

Source:

Rabbit

Isotype:

IgG

Immunogen Catalog Number:

AG6835

GenBank Accession Number:

BC001075

GeneID (NCBI):

60386

UNIPROT ID:

Q9HC21

Full Name:

solute carrier family 25
(mitochondrial thiamine
pyrophosphate carrier), member 19

Calculated MW:

36 kDa

Observed MW:

37 kDa

Purification Method:

Protein A purification

CloneNo.:

242441B3

Recommended Dilutions:

WB 1:5000-1:50000

Applications

Tested Applications:

WB, ELISA

Species Specificity:

human, mouse, rat

Positive Controls:

WB : mouse cerebellum tissue, rat cerebellum tissue

Storage

Storage:

Store at -20°C. Stable for one year after shipment.

Storage Buffer:

PBS with 0.02% sodium azide and 50% glycerol pH 7.3.

Aliquoting is unnecessary for -20°C storage

*** 20ul sizes contain 0.1% BSA

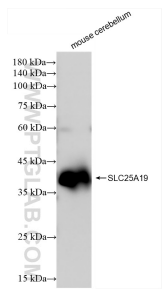
For technical support and original validation data for this product please contact:

T: 1 (888) 4PTGLAB (1-888-478-4522) (toll free
in USA), or 1(312) 455-8498 (outside USA)

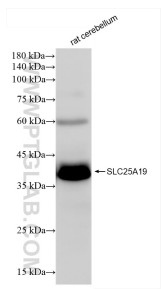
E: proteintech@ptglab.com
W: ptglab.com

This product is exclusively available under Proteintech
Group brand and is not available to purchase from any
other manufacturer.

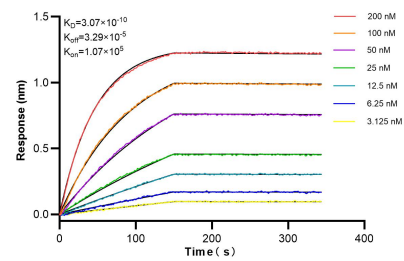
Selected Validation Data



mouse cerebellum tissue were subjected to SDS PAGE followed by western blot with 85331-1-RR (SLC25A19 antibody) at dilution of 1:10000 incubated at room temperature for 1.5 hours.



rat cerebellum tissue were subjected to SDS PAGE followed by western blot with 85331-1-RR (SLC25A19 antibody) at dilution of 1:10000 incubated at room temperature for 1.5 hours.



Biolayer interferometry (BLI) kinetic assays of 85331-1-RR against Human SLC25A19 were performed. The affinity constant is 0.307 nM.