

For Research Use Only

# UBE4B Recombinant antibody, PBS Only (Capture/Detector)

Catalog Number: 85332-3-PBS



## Basic Information

<b>Catalog Number:</b> 85332-3-PBS	<b>GenBank Accession Number:</b> BC093696	<b>Purification Method:</b> Protein A purification
<b>Size:</b> 100ug , Concentration: 1 mg/ml by Nanodrop;	<b>GeneID (NCBI):</b> 10277	<b>CloneNo.:</b> 242218B10
<b>Source:</b> Rabbit	<b>UNIPROT ID:</b> O95155	
<b>Isotype:</b> IgG	<b>Full Name:</b> ubiquitination factor E4B (UFD2 homolog, yeast)	
<b>Immunogen Catalog Number:</b> AG12836	<b>Calculated MW:</b> 1173 aa, 133 kDa	

## Applications

**Tested Applications:**  
Cytometric bead array, Sandwich ELISA, Indirect ELISA, Sample test

**Species Specificity:**  
human

## Product Information

85332-3-PBS targets UBE4B as part of a matched antibody pair:

MP02017-2: 85332-3-PBS capture and 85332-5-PBS detection (validated in Cytometric bead array)

MP02017-3: 85332-5-PBS capture and 85332-3-PBS detection (validated in Sandwich ELISA)

Unconjugated rabbit recombinant monoclonal antibody in PBS only (BSA and azide free) storage buffer at a concentration of 1 mg/mL, ready for conjugation. Created using Proteintech's proprietary in-house recombinant technology. Recombinant production enables unrivalled batch-to-batch consistency, easy scale-up, and future security of supply.

This conjugation ready format makes antibodies ideal for use in many applications including: ELISAs, multiplex assays requiring matched pairs, mass cytometry, and multiplex imaging applications. Antibody use should be optimized by the end user for each application and assay.

## Storage

**Storage:**  
Store at -80°C.  
**Storage Buffer:**  
PBS only, pH7.3

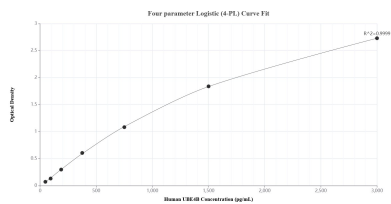
For technical support and original validation data for this product please contact:

T: 1 (888) 4PTGLAB (1-888-478-4522) (toll free in USA), or 1(312) 455-8498 (outside USA)

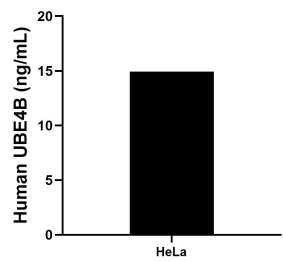
E: [proteintech@ptglab.com](mailto:proteintech@ptglab.com)  
W: [ptglab.com](http://ptglab.com)

This product is exclusively available under Proteintech Group brand and is not available to purchase from any other manufacturer.

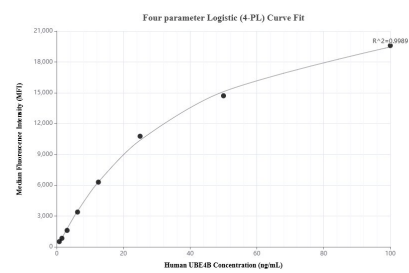
## Selected Validation Data



Sandwich ELISA standard curve of MP02017-3, Human UBE4B Recombinant Matched Antibody Pair - PBS only. 85332-5-PBS was coated to a plate as the capture antibody and incubated with serial dilutions of standard Ag12836. 85332-3-PBS was HRP conjugated as the detection antibody. Range: 46.9-3000 pg/mL.



The mean UBE4B concentration was determined to be 14.9 ng/mL in HeLa cell extract based on a 2.1 mg/mL extract load.



Cytometric bead array standard curve of MP02017-2, UBE4B Recombinant Matched Antibody Pair, PBS Only. Capture antibody: 85332-3-PBS. Detection antibody: 85332-5-PBS. Standard: Ag12836. Range: 0.781-100 ng/mL.