

For Research Use Only

UBE4B Recombinant antibody, PBS Only (Capture/Detector)

Catalog Number: 85332-5-PBS



Basic Information

Catalog Number: 85332-5-PBS	GenBank Accession Number: BC093696	Purification Method: Protein A purification
Size: 100ug , Concentration: 1 mg/ml by Nanodrop;	GeneID (NCBI): 10277	CloneNo.: 242218F2
Source: Rabbit	UNIPROT ID: O95155	
Isotype: IgG	Full Name: ubiquitination factor E4B (UFD2 homolog, yeast)	
Immunogen Catalog Number: AG12836	Calculated MW: 1173 aa, 133 kDa	

Applications

Tested Applications:
Cytometric bead array, Sandwich ELISA, Indirect ELISA, Sample test

Species Specificity:
human

Product Information

85332-5-PBS targets UBE4B as part of a matched antibody pair:

MP02017-1: 85332-5-PBS capture and 85332-4-PBS detection (validated in Cytometric bead array)

MP02017-2: 85332-3-PBS capture and 85332-5-PBS detection (validated in Cytometric bead array)

MP02017-3: 85332-5-PBS capture and 85332-3-PBS detection (validated in Sandwich ELISA)

Unconjugated rabbit recombinant monoclonal antibody in PBS only (BSA and azide free) storage buffer at a concentration of 1 mg/mL, ready for conjugation. Created using Proteintech's proprietary in-house recombinant technology. Recombinant production enables unrivalled batch-to-batch consistency, easy scale-up, and future security of supply.

This conjugation ready format makes antibodies ideal for use in many applications including: ELISAs, multiplex assays requiring matched pairs, mass cytometry, and multiplex imaging applications. Antibody use should be optimized by the end user for each application and assay.

Storage

Storage:
Store at -80°C.

Storage Buffer:
PBS only, pH7.3

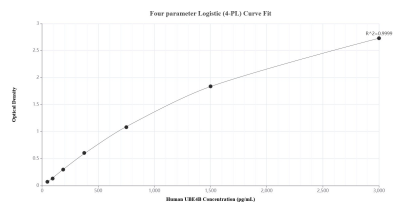
For technical support and original validation data for this product please contact:

T: 1 (888) 4PTGLAB (1-888-478-4522) (toll free in USA), or 1(312) 455-8498 (outside USA)

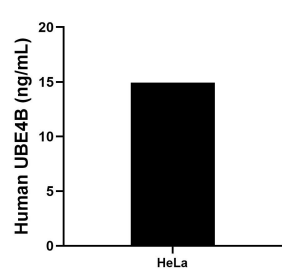
E: proteintech@ptglab.com
W: ptglab.com

This product is exclusively available under Proteintech Group brand and is not available to purchase from any other manufacturer.

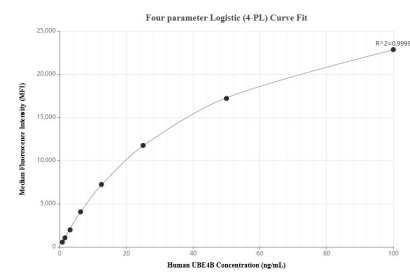
Selected Validation Data



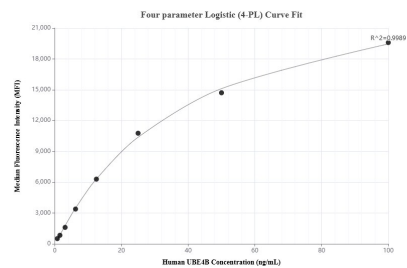
Sandwich ELISA standard curve of MP02017-3, Human UBE4B Recombinant Matched Antibody Pair - PBS only. 85332-5-PBS was coated to a plate as the capture antibody and incubated with serial dilutions of standard Ag12836. 85332-3-PBS was HRP conjugated as the detection antibody. Range: 46.9-3000 pg/mL.



The mean UBE4B concentration was determined to be 14.9 ng/mL in HeLa cell extract based on a 2.1 mg/mL extract load.



Cytometric bead array standard curve of MP02017-1, UBE4B Recombinant Matched Antibody Pair, PBS Only. Capture antibody: 85332-5-PBS. Detection antibody: 85332-4-PBS. Standard: Ag12836. Range: 0.781-100 ng/mL.



Cytometric bead array standard curve of MP02017-2, UBE4B Recombinant Matched Antibody Pair, PBS Only. Capture antibody: 85332-3-PBS. Detection antibody: 85332-5-PBS. Standard: Ag12836. Range: 0.781-100 ng/mL.