

For Research Use Only

# GRIA1 Recombinant antibody

Catalog Number: 85333-1-RR



## Basic Information

<b>Catalog Number:</b> 85333-1-RR	<b>GenBank Accession Number:</b> BC111734	<b>Purification Method:</b> Protein A purification
<b>Size:</b> 100ul , Concentration: 1000 µg/ml by Nanodrop;	<b>GeneID (NCBI):</b> 2890	<b>CloneNo.:</b> 242387E7
<b>Source:</b> Rabbit	<b>UNIPROT ID:</b> P42261	<b>Recommended Dilutions:</b> WB 1:1000-1:6000
<b>Isotype:</b> IgG	<b>Full Name:</b> glutamate receptor, ionotropic, AMPA 1	
<b>Immunogen Catalog Number:</b> AG21502	<b>Calculated MW:</b> 906 aa, 102 kDa	
	<b>Observed MW:</b> 100 kDa	

## Applications

<b>Tested Applications:</b> WB, ELISA	<b>Positive Controls:</b> WB : rat cerebellum tissue, mouse brain tissue, rat brain tissue, pig brain tissue
<b>Species Specificity:</b> human, mouse, rat, pig	

## Background Information

Glutamate receptors are the predominant excitatory neurotransmitter receptors in the mammalian brain and are activated in a variety of normal neurophysiologic processes. These receptors are heteromeric protein complexes with multiple subunits, each possessing transmembrane regions, and all arranged to form a ligand-gated ion channel. The classification of glutamate receptors is based on their activation by different pharmacologic agonists. This gene belongs to a family of alpha-amino-3-hydroxy-5-methyl-4-isoxazole propionate (AMPA) receptors.

## Storage

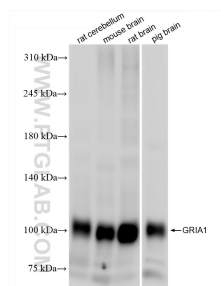
**Storage:**  
Store at -20°C. Stable for one year after shipment.  
**Storage Buffer:**  
PBS with 0.02% sodium azide and 50% glycerol  
Aliquoting is unnecessary for -20°C storage

\*\*\* 20ul sizes contain 0.1% BSA

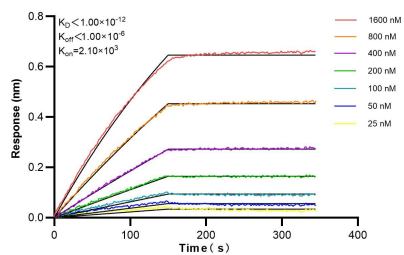
For technical support and original validation data for this product please contact:  
T: 1 (888) 4PTGLAB (1-888-478-4522) (toll free in USA), or 1(312) 455-8498 (outside USA)  
E: proteintech@ptglab.com  
W: ptglab.com

This product is exclusively available under Proteintech Group brand and is not available to purchase from any other manufacturer.

## Selected Validation Data



Various lysates were subjected to SDS PAGE followed by western blot with 85333-1-RR (GRIA1 antibody) at dilution of 1:3000 incubated at room temperature for 1.5 hours.



Biolayer interferometry (BLI) kinetic assays of 85333-1-RR against Human GRIA1 were performed. The affinity constant is below 1 pM.