

For Research Use Only

Lumican Recombinant antibody

Catalog Number: 85343-1-RR



Basic Information

Catalog Number:

85343-1-RR

Size:

100ul , Concentration: 1000 µg/ml by Nanodrop;

Source:

Rabbit

Isotype:

IgG

GenBank Accession Number:

NM_002345.3

GeneID (NCBI):

4060

UNIPROT ID:

P51884

Full Name:

lumican

Calculated MW:

38 kDa

Observed MW:

50-90 kDa

Purification Method:

Protein A purification

CloneNo.:

242615H3

Recommended Dilutions:

WB 1:500-1:2000

Applications

Tested Applications:

WB, ELISA

Species Specificity:

human

Positive Controls:

WB : Jurkat cells, Recombinant protein, HEK-293 cells, Y79 cells, MCF-7 cells

Background Information

Lumican (LUM), a member of the small leucine-rich proteoglycan (SLRP) family, is one of the major extracellular components in interstitial collagenous matrices of the corneal stroma, aorta, skin, skeletal muscle, lung, kidney, bone, cartilage, and intervertebral discs. SLRPs constitute an important fraction of noncollagenous extracellular matrix proteins and have important effects on cell behavior. Lumican regulates collagenous matrix assembly as a keratan sulfate proteoglycan in the cornea and may exist as a glycoprotein in the connective tissues of other organs. Posttranslational modifications lumican goes through can increase its apparent molecular weight to 50-90 kDa. Studies show that lumican participates in the maintenance of tissue homeostasis and modulates cellular functions including cell proliferation, migration, and differentiation. (PMID: 18949819; 22252641; 9761754; 22365843)

Storage

Storage:

Store at -20°C. Stable for one year after shipment.

Storage Buffer:

PBS with 0.02% sodium azide and 50% glycerol pH 7.3.

Aliquoting is unnecessary for -20°C storage

*** 20ul sizes contain 0.1% BSA

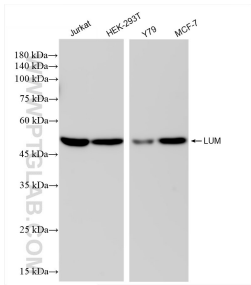
For technical support and original validation data for this product please contact:

T: 1 (888) 4PTGLAB (1-888-478-4522) (toll free in USA), or 1(312) 455-8498 (outside USA)

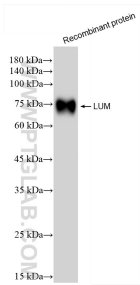
E: proteintech@ptglab.com
W: ptglab.com

This product is exclusively available under Proteintech Group brand and is not available to purchase from any other manufacturer.

Selected Validation Data



Various lysates were subjected to SDS PAGE followed by western blot with 85343-1-RR (LUM antibody) at dilution of 1:1000 incubated at room temperature for 1.5 hours.



Recombinant protein were subjected to SDS PAGE followed by western blot with 85343-1-RR (LUM antibody) at dilution of 1:1000 incubated at room temperature for 1.5 hours.