

For Research Use Only

GLIPR1 Recombinant antibody, PBS Only

Catalog Number: 85345-1-PBS



Basic Information

Catalog Number: 85345-1-PBS	GenBank Accession Number: BC012510	Purification Method: Protein A purification
Size: 100ug , Concentration: 1 mg/ml by Nanodrop;	GeneID (NCBI): 11010	CloneNo.: 242574C4
Source: Rabbit	UNIPROT ID: P48060	
Isotype: IgG	Full Name: GLI pathogenesis-related 1	
Immunogen Catalog Number: AG3205	Calculated MW: 266 aa, 30 kDa	
	Observed MW: 30 kDa	

Applications

Tested Applications:
WB, Indirect ELISA

Species Specificity:
human

Background Information

GLIPR1, also known as related to testis-specific, vespid, and pathogenesis protein 1 (RTVP-1), is a membrane protein that belongs to the CAP family of cysteine-rich secretory proteins. GLIPR1 is closely associated with the development of tumors, especially GM (8,9). The high expression of GLIPR1 was found in GM cells but not in tumors or other cells of the central nervous system.

Storage

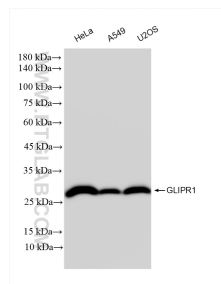
Storage:
Store at -80°C.

Storage Buffer:
PBS Only

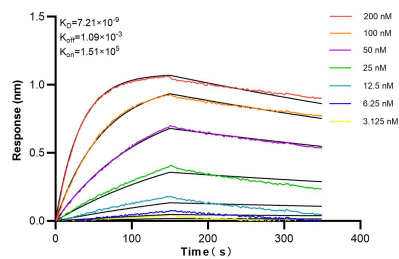
For technical support and original validation data for this product please contact:
T: 1 (888) 4PTGLAB (1-888-478-4522) (toll free in USA), or 1(312) 455-8498 (outside USA)
E: proteintech@ptglab.com
W: ptglab.com

This product is exclusively available under Proteintech Group brand and is not available to purchase from any other manufacturer.

Selected Validation Data



Various lysates were subjected to SDS PAGE followed by western blot with 85345-1-RR (GLIPR1 antibody) at dilution of 1:5000 incubated at room temperature for 1.5 hours. This data was developed using the same antibody clone with 85345-1-PBS in a different storage buffer formulation.



Biolayer interferometry (BLI) kinetic assays of 85345-1-RR against Human GLIPR1 were performed. The affinity constant is 7.21 nM.