

For Research Use Only

RIT1 Recombinant antibody

Catalog Number: 85347-1-RR



Basic Information

Catalog Number: 85347-1-RR	GenBank Accession Number: BC104186	Purification Method: Protein A purification
Size: 100ul , Concentration: 1000 ug/ml by Nanodrop;	GeneID (NCBI): 6016	CloneNo.: 242593E4
Source: Rabbit	UNIPROT ID: Q92963	Recommended Dilutions: WB 1:2000-1:10000
Isotype: IgG	Full Name: Ras-like without CAAX 1	
Immunogen Catalog Number: AG25636	Calculated MW: 25 kDa	
	Observed MW: 25-28 kDa	

Applications

Tested Applications: WB, ELISA	Positive Controls: WB : A549 cells, mouse kidney tissue, HeLa cells
Species Specificity: human, mouse	

Background Information

RIT1 (Ras-like without CAAX protein 1) is also named as RIBB, ROC1 and GTP-binding protein Rit1. RIT1 serves as a regulatory factor for neuronal cell proliferation, survival, and differentiation (PMID: 28007959). Rit1 mediates oxidative stress resistance, contributing to cell survival via the p38 MAPK signaling pathway (PMID: 21737674). As a small G protein of Ras family, RIT1 plays a critical role in various tumors (such as hepatocellular carcinoma, HCC) (PMID: 38017479). It is worth noting that RIT1 is frequently amplified in various human cancers including HCC, lung adenocarcinoma, cholangiocarcinoma, uterine carcinosarcoma, breast cancer, and ovarian cancer (PMID: 38017479).

Storage

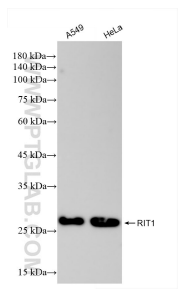
Storage:
Store at -20°C. Stable for one year after shipment.
Storage Buffer:
PBS with 0.02% sodium azide and 50% glycerol pH 7.3.
Aliquoting is unnecessary for -20°C storage

*** 20ul sizes contain 0.1% BSA

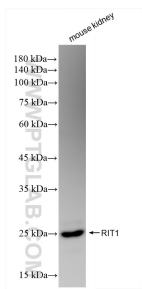
For technical support and original validation data for this product please contact:
T: 1 (888) 4PTGLAB (1-888-478-4522) (toll free in USA), or 1(312) 455-8498 (outside USA)
E: proteintech@ptglab.com
W: ptglab.com

This product is exclusively available under Proteintech Group brand and is not available to purchase from any other manufacturer.

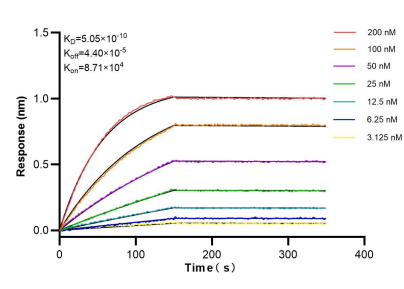
Selected Validation Data



Various lysates were subjected to SDS PAGE followed by western blot with 85347-1-RR (RIT1 antibody) at dilution of 1:5000 incubated at room temperature for 1.5 hours.



Mouse kidney tissue was subjected to SDS PAGE followed by western blot with 85347-1-RR (RIT1 antibody) at dilution of 1:5000 incubated at room temperature for 1.5 hours.



Biolayer interferometry (BLI) kinetic assays of 85347-1-RR against Human RIT1 were performed. The affinity constant is 0.505 nM.