

For Research Use Only

RPL5 Recombinant antibody

Catalog Number: 85348-1-RR



Basic Information

Catalog Number:

85348-1-RR

Size:

100ul , Concentration: 1000 µg/ml by Nanodrop;

Source:

Rabbit

Isotype:

IgG

Immunogen Catalog Number:

AG30837

GenBank Accession Number:

BC109370

GeneID (NCBI):

6125

UNIPROT ID:

P46777

Full Name:

ribosomal protein L5

Observed MW:

34 kDa

Purification Method:

Protein A purification

CloneNo.:

242678D3

Recommended Dilutions:

WB 1:5000-1:50000

Applications

Tested Applications:

WB, ELISA

Species Specificity:

human, mouse, monkey

Positive Controls:

WB : PC-3 cells, 3T3-L1 cells, A431 cells, HeLa cells, Jurkat cells, MOLT-4 cells, COS-7 cells

Background Information

RPL5 (Ribosomal Protein L5) is a crucial component of the 60S ribosomal subunit, playing a significant role in ribosome biogenesis and function. It is required for rRNA maturation and the formation of the 60S ribosomal subunits. Defects or mutations in RPL5 are associated with Diamond-Blackfan anemia (DBA), a congenital disorder characterized by red blood cell aplasia.(PMID: 28376382)

Storage

Storage:

Store at -20°C. Stable for one year after shipment.

Storage Buffer:

PBS with 0.02% sodium azide and 50% glycerol, pH7.3

Aliquoting is unnecessary for -20°C storage

*** 20ul sizes contain 0.1% BSA

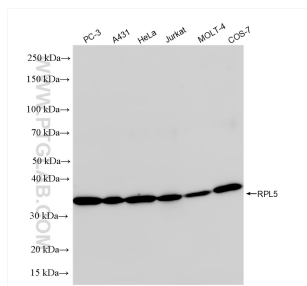
For technical support and original validation data for this product please contact:

T: 1 (888) 4PTGLAB (1-888-478-4522) (toll free in USA), or 1(312) 455-8498 (outside USA)

E: proteintech@ptglab.com
W: ptglab.com

This product is exclusively available under Proteintech Group brand and is not available to purchase from any other manufacturer.

Selected Validation Data



Various lysates were subjected to SDS PAGE followed by western blot with 85348-1-RR (RPL5 antibody) at dilution of 1:10000 incubated at room temperature for 1.5 hours.