

For Research Use Only

ADRA1A-Specific Recombinant antibody

Catalog Number: 85351-1-RR



Basic Information

Catalog Number:

85351-1-RR

Size:

100ul , Concentration: 1000 µg/ml by 148 Nanodrop;

Source:

Rabbit

Isotype:

IgG

GenBank Accession Number:

NM_000680

GeneID (NCBI):

148

UNIPROT ID:

P35348

Full Name:

adrenergic, alpha-1A-, receptor

Calculated MW:

51 kDa

Observed MW:

52 kDa

Purification Method:

Protein A purification

CloneNo.:

242672E2

Recommended Dilutions:

WB 1:5000-1:50000

Applications

Tested Applications:

WB, ELISA

Species Specificity:

human, mouse

Positive Controls:

WB : HeLa cells, HEK-293 cells, HepG2 cells, NIH/3T3 cells, RAW 264.7 cells

Background Information

ADRA1A, also named ADRA1C, belongs to the G-protein coupled receptor 1 family. ADRA1A mediates its action by association with G proteins that activate a phosphatidylinositol-calcium second messenger system. Its effect is mediated by G(q) and G(11) proteins. The antibody is specific to ADRA1A.

Storage

Storage:

Store at -20°C. Stable for one year after shipment.

Storage Buffer:

PBS with 0.02% sodium azide and 50% glycerol pH 7.3.

Aliquoting is unnecessary for -20°C storage

*** 20ul sizes contain 0.1% BSA

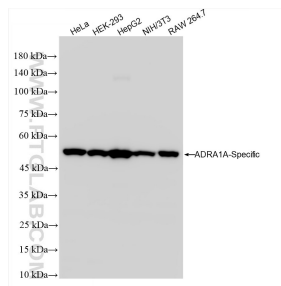
For technical support and original validation data for this product please contact:

T: 1 (888) 4PTGLAB (1-888-478-4522) (toll free in USA), or 1(312) 455-8498 (outside USA)

E: proteintech@ptglab.com
W: ptglab.com

This product is exclusively available under Proteintech Group brand and is not available to purchase from any other manufacturer.

Selected Validation Data



Various lysates were subjected to SDS PAGE followed by western blot with 85351-1-RR (ADRA1A-Specific antibody) at dilution of 1:10000 incubated at room temperature for 1.5 hours.