

For Research Use Only

PTK6/BRK Recombinant antibody, PBS Only

Catalog Number: 85352-2-PBS



Basic Information

Catalog Number:

85352-2-PBS

Size:

100ug, Concentration: 1 mg/ml by Nanodrop;

Source:

Rabbit

Isotype:

IgG

GenBank Accession Number:

BC035843

GeneID (NCBI):

5753

UNIPROT ID:

Q13882

Full Name:

PTK6 protein tyrosine kinase 6

Calculated MW:

52 kDa

Observed MW:

52 kDa

Purification Method:

Protein A purification

CloneNo.:

242647F4

Applications

Tested Applications:

WB, IF/ICC, Indirect ELISA

Species Specificity:

human

Background Information

BRK, also named as PTK6 and FLJ42088, is a cytoplasmic nonreceptor protein kinase which may function as an intracellular signal transducer in epithelial tissues. PTK6 can phosphorylate KHDRBS1, KHDRBS2, KHDRBS3 and STAP2/BKS. Overexpression of PTK6 in mammary epithelial cells leads to sensitization of the cells to epidermal growth factor and results in a partially transformed phenotype. Expression of PTK6 has been detected at low levels in some breast tumors but not in normal breast tissue. Its presence in the nucleus appears to be linked to suppression of tumor progression. This antibody is specific to PTK6.

Storage

Storage:

Store at -80°C.

Storage Buffer:

PBS Only

For technical support and original validation data for this product please contact:

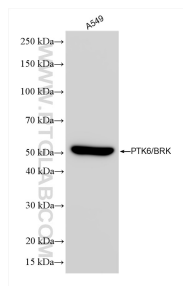
T: 1 (888) 4PTGLAB (1-888-478-4522) (toll free in USA), or 1(312) 455-8498 (outside USA)

E: proteintech@ptglab.com

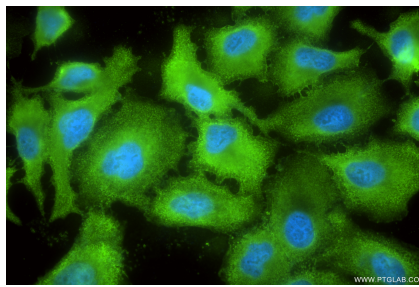
W: ptglab.com

This product is exclusively available under Proteintech Group brand and is not available to purchase from any other manufacturer.

Selected Validation Data



Various lysates were subjected to SDS PAGE followed by western blot with 85352-2-RR (PTK6/BRK antibody) at dilution of 1:10000 incubated at room temperature for 1.5 hours. This data was developed using the same antibody clone with 85352-2-PBS in a different storage buffer formulation.



Immunofluorescent analysis of (-20°C Ethanol) fixed A549 cells using PTK6 antibody (85352-2-RR, Clone: 242647F4) at dilution of 1:400 and CoraLite® 488-Conjugated Goat Anti-Rabbit IgG(H+L) (SA00013-2). This data was developed using the same antibody clone with 85352-2-PBS in a different storage buffer formulation.