

For Research Use Only

# SLC25A6-Specific Recombinant antibody

Catalog Number: 85368-1-RR



## Basic Information

### Catalog Number:

85368-1-RR

### Size:

100ul, Concentration: 1000 µg/ml by Nanodrop;

### Source:

Rabbit

### Isotype:

IgG

### GenBank Accession Number:

NM\_001636

### GeneID (NCBI):

293

### UNIPROT ID:

P12236

### Full Name:

solute carrier family 25 (mitochondrial carrier; adenine nucleotide translocator), member 6

### Calculated MW:

33 kDa

### Observed MW:

30-33 kDa

### Purification Method:

Protein A purification

### CloneNo.:

242652A8

### Recommended Dilutions:

WB 1:5000-1:50000

IF/ICC 1:250-1:1000

## Applications

### Tested Applications:

WB, IF/ICC, ELISA

### Species Specificity:

human, mouse, rat

### Positive Controls:

WB : HEK-293 cells, L02 cells, A549 cells, HuH-7 cells, mouse heart tissue, rat heart tissue, human placenta

IF/ICC : A549 cells,

## Background Information

SLC25A6, also known as ANT3 (adenine nucleotide translocase 3), is a member of the solute carrier family 25, specifically the mitochondrial carrier subfamily. As part of the mitochondrial carrier family, SLC25A6 plays a role in the mitochondrial energy production process by facilitating the exchange of metabolites necessary for oxidative phosphorylation (PMID: 23506884).

## Storage

### Storage:

Store at -20°C. Stable for one year after shipment.

### Storage Buffer:

PBS with 0.02% sodium azide and 50% glycerol

Aliquoting is unnecessary for -20°C storage

\*\*\* 20ul sizes contain 0.1% BSA

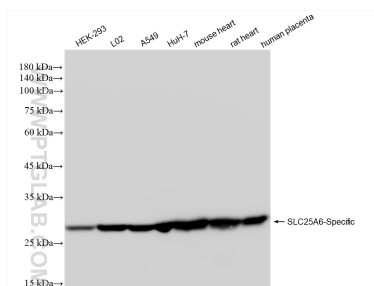
For technical support and original validation data for this product please contact:

T: 1 (888) 4PTGLAB (1-888-478-4522) (toll free in USA), or 1(312) 455-8498 (outside USA)

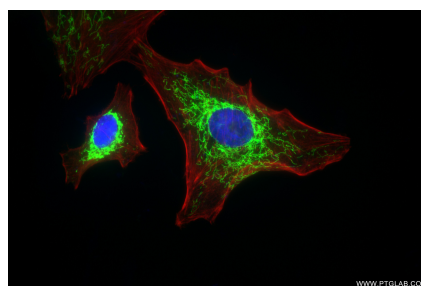
E: [proteintech@ptglab.com](mailto:proteintech@ptglab.com)  
W: [ptglab.com](http://ptglab.com)

This product is exclusively available under Proteintech Group brand and is not available to purchase from any other manufacturer.

## Selected Validation Data



Various lysates were subjected to SDS PAGE followed by western blot with 85368-1-RR (SLC25A6-Specific antibody) at dilution of 1:10000 incubated at room temperature for 1.5 hours.



Immunofluorescent analysis of (4% PFA) fixed A549 cells using SLC25A6-Specific antibody (85368-1-RR, Clone: 242652A8 ) at dilution of 1:500 and CoraLite® 488-Conjugated Goat Anti-Rabbit IgG(H+L) (SA00013-2), CL594-Phalloidin (red).