

For Research Use Only

ERLIN1 Recombinant antibody

Catalog Number: 85377-1-RR



Basic Information

Catalog Number:

85377-1-RR

Size:

100ul , Concentration: 1000 µg/ml by Nanodrop;

Source:

Rabbit

Isotype:

IgG

Immunogen Catalog Number:

AG11393

GenBank Accession Number:

BC031791

GeneID (NCBI):

10613

UNIPROT ID:

O75477

Full Name:

ER lipid raft associated 1

Calculated MW:

346 aa, 39 kDa

Observed MW:

39 kDa

Purification Method:

Protein A purification

CloneNo.:

242778B10

Recommended Dilutions:

WB 1:2000-1:10000

Applications

Tested Applications:

WB, ELISA

Species Specificity:

human

Positive Controls:

WB : U-937 cells, HL-60 cells, HepG2 cells, A549 cells

Background Information

ERLIN1, also known as Erlin-1 or SPFH1, stands for "ER lipid raft-associated protein 1." It is a protein-coding gene that plays a significant role in cellular processes, particularly in the endoplasmic reticulum (ER). The ER is a crucial organelle involved in protein synthesis, lipid metabolism, and calcium homeostasis. ERLIN1 is part of the SPFH (stomatol, prohibitin, flotillin, and HflK/C) domain-containing family of proteins, which are often associated with lipid rafts-microdomains within cellular membranes that are enriched in cholesterol and sphingolipids. ERLIN1 is involved in the regulation of protein degradation, particularly through the ER-associated degradation (ERAD) pathway (PMID: 37683630).

Storage

Storage:

Store at -20°C. Stable for one year after shipment.

Storage Buffer:

PBS with 0.02% sodium azide and 50% glycerol pH 7.3.

Aliquoting is unnecessary for -20°C storage

*** 20ul sizes contain 0.1% BSA

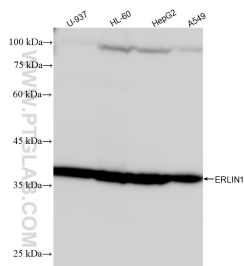
For technical support and original validation data for this product please contact:

T: 1 (888) 4PTGLAB (1-888-478-4522) (toll free in USA), or 1(312) 455-8498 (outside USA)

E: proteintech@ptglab.com
W: ptglab.com

This product is exclusively available under Proteintech Group brand and is not available to purchase from any other manufacturer.

Selected Validation Data



Various lysates were subjected to SDS PAGE followed by western blot with 85377-1-RR (ERLIN1 antibody) at dilution of 1:5000 incubated at room temperature for 1.5 hours.