

For Research Use Only

# KATNAL1 Recombinant antibody

Catalog Number: 85382-1-RR



## Basic Information

<b>Catalog Number:</b> 85382-1-RR	<b>GenBank Accession Number:</b> BC000612	<b>Purification Method:</b> Protein A purification
<b>Size:</b> 100ul , Concentration: 1000 µg/ml by Nanodrop;	<b>GeneID (NCBI):</b> 84056	<b>CloneNo.:</b> 242796B5
<b>Source:</b> Rabbit	<b>UNIPROT ID:</b> Q9BW62	<b>Recommended Dilutions:</b> WB 1:5000-1:50000
<b>Isotype:</b> IgG	<b>Full Name:</b> katanin p60 subunit A-like 1	
<b>Immunogen Catalog Number:</b> AG13960	<b>Calculated MW:</b> 490 aa, 55 kDa	
	<b>Observed MW:</b> 50-55 kDa	

## Applications

<b>Tested Applications:</b> WB, ELISA	<b>Positive Controls:</b> WB : HeLa cells, MCF-7 cells, HEK-293 cells, Jurkat cells, PC-12 cells
<b>Species Specificity:</b> human, rat	

## Background Information

KATNAL1 belongs to a family of microtubule-severing proteins and contains an N-terminal microtubule interaction and trafficking (MIT) domain, an ATPase AAA-type core domain, and a C-terminal Vps4\_C domain. KATNAL1 is involved in regulating microtubule dynamics, which is essential for spermiogenesis and male fertility. It severs microtubules in an ATP-dependent manner, promoting rapid reorganization of cellular microtubule arrays (PMID: 22654668). In neurons, KATNAL1 plays a role in microtubule rearrangement during neuronal migration and process elongation. Additionally, mutations in KATNAL1 have been associated with intellectual disability and microcephaly in humans (PMID: 30448058).

## Storage

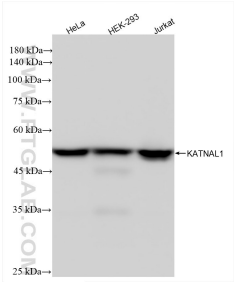
**Storage:**  
Store at -20°C. Stable for one year after shipment.  
**Storage Buffer:**  
PBS with 0.02% sodium azide and 50% glycerol pH 7.3.  
Aliquoting is unnecessary for -20°C storage

\*\*\* 20ul sizes contain 0.1% BSA

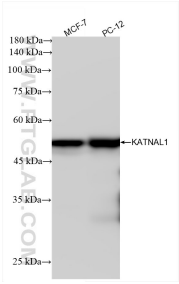
For technical support and original validation data for this product please contact:  
T: 1 (888) 4PTGLAB (1-888-478-4522) (toll free in USA), or 1(312) 455-8498 (outside USA)  
E: [proteintech@ptglab.com](mailto:proteintech@ptglab.com)  
W: [ptglab.com](http://ptglab.com)

This product is exclusively available under Proteintech Group brand and is not available to purchase from any other manufacturer.

Selected Validation Data



Various lysates were subjected to SDS PAGE followed by western blot with 85382-1-RR (KATNAL1 antibody) at dilution of 1:10000 incubated at room temperature for 1.5 hours.



Various lysates were subjected to SDS PAGE followed by western blot with 85382-1-RR (KATNAL1 antibody) at dilution of 1:10000 incubated at room temperature for 1.5 hours.