

For Research Use Only

MAP4K4 Recombinant monoclonal antibody, PBS Only

Catalog Number: 85387-1-PBS



Basic Information

Catalog Number: 85387-1-PBS	GenBank Accession Number: NM_004834	Purification Method: Protein A purification
Size: 100ug, Concentration: 1 mg/ml by Nanodrop;	GeneID (NCBI): 9448	CloneNo.: 242721G1
Source: Rabbit	UNIPROT ID: O95819	
Isotype: IgG	Full Name: mitogen-activated protein kinase kinase kinase 4	
	Calculated MW: 151 kDa	

Applications

Tested Applications:
IF/ICC, FC (Intra), Indirect ELISA

Species Specificity:
human

Background Information

MAP4K4, also named as RAB8IPL1, GLK and MEKKK4, belongs to the protein kinase superfamily, STE Ser/Thr protein kinase family and STE20 subfamily. It may play a role in the response to environmental stress. MAP4K4 appears to act upstream of the JUN N-terminal pathway.

Storage

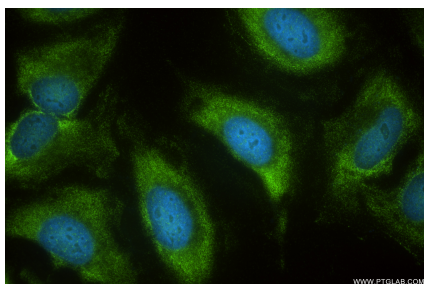
Storage:
Store at -80°C.

Storage Buffer:
PBS only, pH7.3

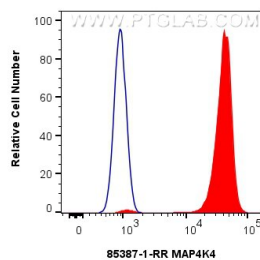
For technical support and original validation data for this product please contact:
T: 1 (888) 4PTGLAB (1-888-478-4522) (toll free in USA), or 1(312) 455-8498 (outside USA)
E: proteintech@ptglab.com
W: ptglab.com

This product is exclusively available under Proteintech Group brand and is not available to purchase from any other manufacturer.

Selected Validation Data



Immunofluorescent analysis of (-20°C Ethanol) fixed HeLa cells using MAP4K4 antibody (85387-1-RR, Clone: 242721G1) at dilution of 1:400 and CoraLite®488-Conjugated Goat Anti-Rabbit IgG(H+L) (SA00013-2). This data was developed using the same antibody clone with 85387-1-PBS in a different storage buffer formulation.



1x10⁶ HepG2 cells were intracellularly stained with 0.25 ug MAP4K4 Recombinant monoclonal antibody (85387-1-RR, Clone:242721G1) and CoraLite®488-Conjugated Goat Anti-Rabbit IgG(H+L) (SA00013-2)(red), or 0.25 ug Rabbit IgG Isotype Control RecAb (98136-1-RR, Clone: 240953C9) (blue). Cells were fixed and permeabilized with Intracellular Flow Cytometry Fixation & Permeabilization Buffer Kit (PF00019). This data was

