

For Research Use Only

MAP4K4 Recombinant monoclonal antibody, PBS Only

Catalog Number: 85387-2-PBS



Basic Information

Catalog Number: 85387-2-PBS	GenBank Accession Number: NM_004834	Purification Method: Protein A purification
Size: 100ug , Concentration: 1 mg/ml by Nanodrop;	GeneID (NCBI): 9448	CloneNo.: 242721G2
Source: Rabbit	UNIPROT ID: O95819	
Isotype: IgG	Full Name: mitogen-activated protein kinase kinase kinase 4	
	Calculated MW: 151 kDa	
	Observed MW: 130-160 kDa	

Applications

Tested Applications:
WB, Indirect ELISA

Species Specificity:
human

Background Information

MAP4K4, also named as RAB8IPL1, GLK and MEKKK4, belongs to the protein kinase superfamily, STE Ser/Thr protein kinase family and STE20 subfamily. It may play a role in the response to environmental stress. MAP4K4 appears to act upstream of the JUN N-terminal pathway.

Storage

Storage:
Store at -80°C.

Storage Buffer:
PBS only, pH7.3

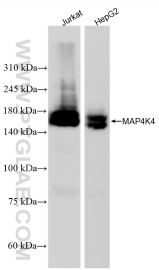
For technical support and original validation data for this product please contact:

T: 1 (888) 4PTGLAB (1-888-478-4522) (toll free in USA), or 1(312) 455-8498 (outside USA)

E: proteintech@ptglab.com
W: ptglab.com

This product is exclusively available under Proteintech Group brand and is not available to purchase from any other manufacturer.

Selected Validation Data



Various lysates were subjected to SDS PAGE followed by western blot with 85387-2-RR (MAP4K4 antibody) at dilution of 1:3000 incubated at room temperature for 1.5 hours. This data was developed using the same antibody clone with 85387-2-PBS in a different storage buffer formulation.