

For Research Use Only

# MAP4K4 Recombinant monoclonal antibody

Catalog Number: 85387-2-RR



## Basic Information

<b>Catalog Number:</b> 85387-2-RR	<b>GenBank Accession Number:</b> NM_004834	<b>Purification Method:</b> Protein A purification
<b>Size:</b> 100ul , Concentration: 1000 µg/ml by Nanodrop;	<b>GeneID (NCBI):</b> 9448	<b>CloneNo.:</b> 242721G2
<b>Source:</b> Rabbit	<b>UNIPROT ID:</b> O95819	<b>Recommended Dilutions:</b> WB: 1:1000-1:6000
<b>Isotype:</b> IgG	<b>Full Name:</b> mitogen-activated protein kinase kinase kinase 4	
	<b>Calculated MW:</b> 151 kDa	
	<b>Observed MW:</b> 130-160 kDa	

## Applications

<b>Tested Applications:</b> WB, ELISA	<b>Positive Controls:</b> WB : Jurkat cells, HepG2 cells
<b>Species Specificity:</b> human	

## Background Information

MAP4K4, also named as RAB8IPL1, GLK and MEKKK4, belongs to the protein kinase superfamily, STE Ser/Thr protein kinase family and STE20 subfamily. It may play a role in the response to environmental stress. MAP4K4 appears to act upstream of the JUN N-terminal pathway.

## Storage

**Storage:**  
Store at -20°C. Stable for one year after shipment.  
**Storage Buffer:**  
PBS with 0.02% sodium azide and 50% glycerol, pH7.3  
Aliquoting is unnecessary for -20°C storage

\*\*\* 20ul sizes contain 0.1% BSA

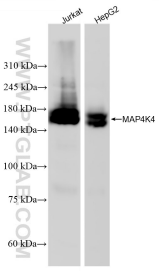
For technical support and original validation data for this product please contact:

T: 1 (888) 4PTGLAB (1-888-478-4522) (toll free in USA), or 1(312) 455-8498 (outside USA)

E: [proteintech@ptglab.com](mailto:proteintech@ptglab.com)  
W: [ptglab.com](http://ptglab.com)

This product is exclusively available under Proteintech Group brand and is not available to purchase from any other manufacturer.

## Selected Validation Data



Various lysates were subjected to SDS PAGE followed by western blot with 85387-2-RR (MAP4K4 antibody) at dilution of 1:3000 incubated at room temperature for 1.5 hours.