

For Research Use Only

# Phospho-SMAD1 (Ser206) Recombinant monoclonal antibody, PBS Only

Catalog Number: 85388-5-PBS



## Basic Information

<b>Catalog Number:</b> 85388-5-PBS	<b>GenBank Accession Number:</b> BC001878	<b>Purification Method:</b> Protein A purification
<b>Size:</b> 100ug , Concentration: 1 mg/ml by Nanodrop;	<b>GeneID (NCBI):</b> 4086	<b>CloneNo.:</b> 250898C8
<b>Source:</b> Rabbit	<b>UNIPROT ID:</b> Q15797	
<b>Isotype:</b> IgG	<b>Full Name:</b> SMAD family member 1	
	<b>Calculated MW:</b> 52 kDa	
	<b>Observed MW:</b> 60 kDa	

## Applications

**Tested Applications:**  
WB, Indirect ELISA, ChIP-qPCR

**Species Specificity:**  
human

## Background Information

SMAD family member 1 (Smad1) have been involved in metastatic progression of many cancer types. Smad1 can be induced by many tumor-stimulating cytokines such as the bone morphogenetic protein 2 (BMP2) and TNF $\alpha$  and plays important roles in cell invasion and metastasis. BMP2 signaling is initiated by binding to its specific receptors, which leads to in the phosphorylation and nuclear translocation of Smad1. Translocated Smad1 then modulates the expression of downstream osteogenic genes. (PMID: 32954678, PMID: 30008908)

## Storage

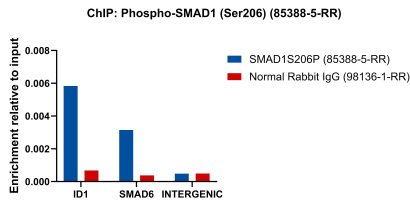
**Storage:**  
Store at -80°C.

**Storage Buffer:**  
PBS only, pH7.3

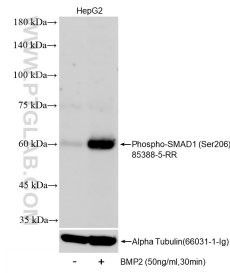
For technical support and original validation data for this product please contact:  
T: 1 (888) 4PTGLAB (1-888-478-4522) (toll free in USA), or 1(312) 455-8498 (outside USA)      E: [proteintech@ptglab.com](mailto:proteintech@ptglab.com)      W: [ptglab.com](http://ptglab.com)

This product is exclusively available under Proteintech Group brand and is not available to purchase from any other manufacturer.

## Selected Validation Data



Chromatin was prepared from MCF-7 cells treated with BMP2 (50 ng/mL) for 1 h. Cells were fixed with formaldehyde for 10 minutes. The ChIP was performed with 15 µg of cross-linked chromatin, 5 µg of Phospho-SMAD1 (Ser206) (85388-5-RR) or 5 µg of Normal Rabbit IgG (98136-1-RR), and 20 µl of Protein A Magarose Beads. The immunoprecipitated DNA was quantified by real-time PCR. This data was developed using the same antibody clone with 85388-5-



Non-treated HepG2 cells and BMP2 (HZ-1128) treated HepG2 cells were subjected to SDS PAGE followed by western blot with 85388-5-RR (Phospho-SMAD1 (Ser206) antibody) at dilution of 1:1000 incubated at room temperature for 1.5 hours. The membrane was stripped and re-blotted with Alpha Tubulin (66031-1-Ig) antibody as a loading control. This data was developed using the same antibody clone with 85388-5-PBS in a different storage buffer formulation.