

For Research Use Only

Phospho-SMAD1 (Ser206) Recombinant monoclonal antibody

Catalog Number: 85388-5-RR



Basic Information

Catalog Number: 85388-5-RR	GenBank Accession Number: BC001878	Purification Method: Protein A purification
Size: 100ul , Concentration: 1000 µg/ml by Nanodrop;	GeneID (NCBI): 4086	CloneNo.: 250898C8
Source: Rabbit	UNIPROT ID: Q15797	Recommended Dilutions: WB: 1:500-1:2000 ChIP-qPCR: 1:10-1:100
Isotype: IgG	Full Name: SMAD family member 1	
	Calculated MW: 52 kDa	
	Observed MW: 60 kDa	

Applications

Tested Applications: WB, ELISA, ChIP-qPCR	Positive Controls: WB : BMP2 treated HepG2 cells, ChIP-qPCR : BMP2 (50 ng/mL, 1 h) MCF-7 cells,
Species Specificity: human	

Background Information

SMAD family member 1 (Smad1) have been involved in metastatic progression of many cancer types. Smad1 can be induced by many tumor-stimulating cytokines such as the bone morphogenetic protein 2 (BMP2) and TNF α and plays important roles in cell invasion and metastasis. BMP2 signaling is initiated by binding to its specific receptors, which leads to in the phosphorylation and nuclear translocation of Smad1. Translocated Smad1 then modulates the expression of downstream osteogenic genes. (PMID: 32954678, PMID: 30008908)

Storage

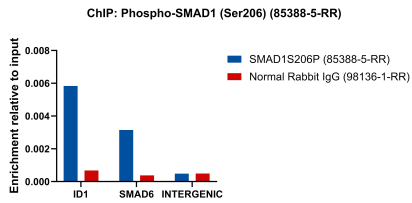
Storage:
Store at -20°C. Stable for one year after shipment.
Storage Buffer:
PBS with 0.02% sodium azide and 50% glycerol, pH7.3
Aliquoting is unnecessary for -20°C storage

*** 20ul sizes contain 0.1% BSA

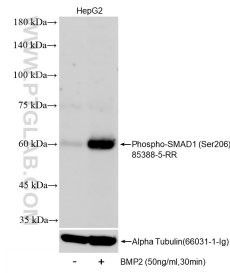
For technical support and original validation data for this product please contact:
T: 1 (888) 4PTGLAB (1-888-478-4522) (toll free in USA), or 1(312) 455-8498 (outside USA)
E: proteintech@ptglab.com
W: ptglab.com

This product is exclusively available under Proteintech Group brand and is not available to purchase from any other manufacturer.

Selected Validation Data



Chromatin was prepared from MCF-7 cells treated with BMP2 (50 ng/mL) for 1 h. Cells were fixed with formaldehyde for 10 minutes. The ChIP was performed with 15 μ g of cross-linked chromatin, 5 μ g of Phospho-SMAD1 (Ser206) (85388-5-RR) or 5 μ g of Normal Rabbit IgG (98136-1-RR), and 20 μ l of Protein A Magarose Beads. The immunoprecipitated DNA was quantified by real-time PCR.



Non-treated HepG2 cells and BMP2 (HZ-1128) treated HepG2 cells were subjected to SDS PAGE followed by western blot with 85388-5-RR (Phospho-SMAD1 (Ser206) antibody) at dilution of 1:1000 incubated at room temperature for 1.5 hours. The membrane was stripped and re-blotted with Alpha Tubulin (66031-1-Ig) antibody as a loading control.