

For Research Use Only

# FCER1G Recombinant antibody, PBS Only

Catalog Number: 85390-1-PBS



## Basic Information

<b>Catalog Number:</b> 85390-1-PBS	<b>GenBank Accession Number:</b> BC033872	<b>Purification Method:</b> Protein A purification
<b>Size:</b> 100ug , Concentration: 1 mg/ml by Nanodrop;	<b>GeneID (NCBI):</b> 2207	<b>CloneNo.:</b> 242829C5
<b>Source:</b> Rabbit	<b>UNIPROT ID:</b> P30273	
<b>Isotype:</b> IgG	<b>Full Name:</b> Fc fragment of IgE, high affinity I, receptor for; gamma polypeptide	
<b>Immunogen Catalog Number:</b> AG4442	<b>Calculated MW:</b> 87 aa, 10 kDa	

## Applications

**Tested Applications:**  
IF/ICC, Indirect ELISA

**Species Specificity:**  
human, mouse

## Background Information

FCER1G (Fc receptor gamma-chain, FcRgamma), also known as Fc-epsilon RI-gamma, or IgE Fc receptor subunit gamma (FceRI gamma), is a component of the high-affinity immunoglobulin E (IgE) receptor (Fc epsilon RI) which is a tetrameric complex of one alpha subunit, one beta subunit, and two disulfide-linked gamma subunits (PMID: 2146219; 2531187). Fc epsilon RI is present exclusively on mast cells and basophils, mediating allergic inflammatory signaling (PMID: 17438574). FCER1G is widely expressed and contains an immunoreceptor tyrosine-based activation motif (ITAM) that transduces activation signals from various immunoreceptors (PMID: 19098920).

## Storage

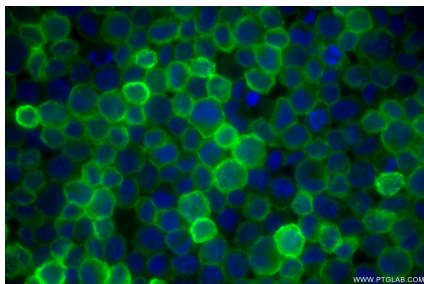
**Storage:**  
Store at -80°C.

**Storage Buffer:**  
PBS only, pH7.3

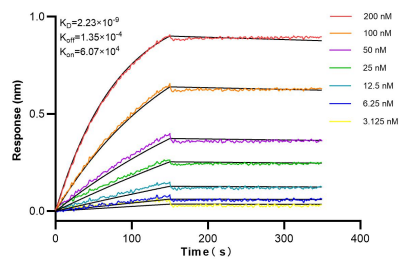
For technical support and original validation data for this product please contact:  
T: 1 (888) 4PTGLAB (1-888-478-4522) (toll free in USA), or 1(312) 455-8498 (outside USA)  
E: [proteintech@ptglab.com](mailto:proteintech@ptglab.com)  
W: [ptglab.com](http://ptglab.com)

This product is exclusively available under Proteintech Group brand and is not available to purchase from any other manufacturer.

## Selected Validation Data



Immunofluorescent analysis of (4% PFA) fixed THP-1 cells using FCER1G antibody (85390-1-RR, Clone: 242829C5) at dilution of 1:500 and CoraLite®488-Conjugated Goat Anti-Rabbit IgG(H+L) (SA00013-2). This data was developed using the same antibody clone with 85390-1-PBS in a different storage buffer formulation.



Biolayer interferometry (BLI) kinetic assays of 85390-1-RR against Human FCER1G were performed. The affinity constant is 2.23 nM.