

For Research Use Only

FCER1G Recombinant antibody

Catalog Number: 85390-1-RR



Basic Information

Catalog Number: 85390-1-RR	GenBank Accession Number: BC033872	Purification Method: Protein A purification
Size: 100ul , Concentration: 1000 µg/ml by Nanodrop;	GeneID (NCBI): 2207	CloneNo.: 242829C5
Source: Rabbit	UNIPROT ID: P30273	Recommended Dilutions: IF/ICC 1:250-1:1000
Isotype: IgG	Full Name: Fc fragment of IgE, high affinity I, receptor for; gamma polypeptide	
Immunogen Catalog Number: AG4442	Calculated MW: 87 aa, 10 kDa	

Applications

Tested Applications: IF/ICC, ELISA	Positive Controls: IF/ICC : THP-1 cells, RAW 264.7 cells
Species Specificity: human, mouse	

Background Information

FCER1G (Fc receptor gamma-chain, FcRgamma), also known as Fc-epsilon RI-gamma, or IgE Fc receptor subunit gamma (FceRI gamma), is a component of the high-affinity immunoglobulin E (IgE) receptor (Fc epsilon RI) which is a tetrameric complex of one alpha subunit, one beta subunit, and two disulfide-linked gamma subunits (PMID: 2146219; 2531187). Fc epsilon RI is present exclusively on mast cells and basophils, mediating allergic inflammatory signaling (PMID: 17438574). FCER1G is widely expressed and contains an immunoreceptor tyrosine-based activation motif (ITAM) that transduces activation signals from various immunoreceptors (PMID: 19098920).

Storage

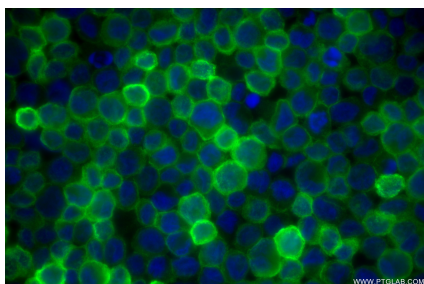
Storage:
Store at -20°C. Stable for one year after shipment.
Storage Buffer:
PBS with 0.02% sodium azide and 50% glycerol, pH7.3
Aliquoting is unnecessary for -20°C storage

*** 20ul sizes contain 0.1% BSA

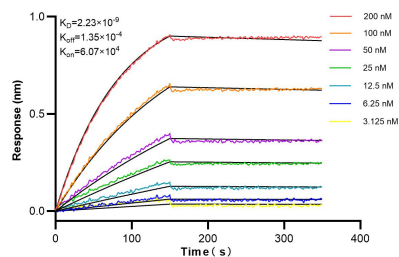
For technical support and original validation data for this product please contact:
T: 1 (888) 4PTGLAB (1-888-478-4522) (toll free in USA), or 1(312) 455-8498 (outside USA)
E: proteintech@ptglab.com
W: ptglab.com

This product is exclusively available under Proteintech Group brand and is not available to purchase from any other manufacturer.

Selected Validation Data



Immunofluorescent analysis of (4% PFA) fixed THP-1 cells using FCER1G antibody (85390-1-RR, Clone: 242829C5) at dilution of 1:500 and CoraLite®488-Conjugated Goat Anti-Rabbit IgG(H+L) (SA00013-2).



Biolayer interferometry (BLI) kinetic assays of 85390-1-RR against Human FCER1G were performed. The affinity constant is 2.23 nM.