

For Research Use Only

FCER1G Recombinant antibody, PBS Only

Catalog Number: 85390-2-PBS



Basic Information

Catalog Number: 85390-2-PBS	GenBank Accession Number: BC033872	Purification Method: Protein A purification
Size: 100ug , Concentration: 1 mg/ml by Nanodrop;	GeneID (NCBI): 2207	CloneNo.: 242829E3
Source: Rabbit	UNIPROT ID: P30273	
Isotype: IgG	Full Name: Fc fragment of IgE, high affinity I, receptor for; gamma polypeptide	
Immunogen Catalog Number: AG4442	Calculated MW: 87 aa, 10 kDa	
	Observed MW: 10 kDa	

Applications

Tested Applications:
WB, Indirect ELISA

Species Specificity:
human, mouse, pig

Background Information

FCER1G (Fc receptor gamma-chain, FcRgamma), also known as Fc-epsilon RI-gamma, or IgE Fc receptor subunit gamma (FceRI gamma), is a component of the high-affinity immunoglobulin E (IgE) receptor (Fc epsilon RI) which is a tetrameric complex of one alpha subunit, one beta subunit, and two disulfide-linked gamma subunits (PMID: 2146219; 2531187). Fc epsilon RI is present exclusively on mast cells and basophils, mediating allergic inflammatory signaling (PMID: 17438574). FCER1G is widely expressed and contains an immunoreceptor tyrosine-based activation motif (ITAM) that transduces activation signals from various immunoreceptors (PMID: 19098920).

Storage

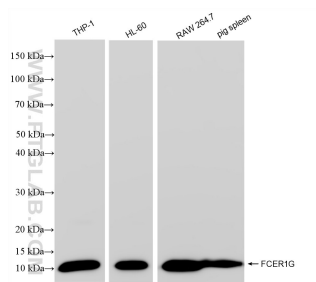
Storage:
Store at -80°C.

Storage Buffer:
PBS only, pH7.3

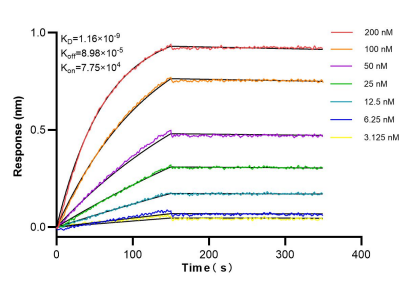
For technical support and original validation data for this product please contact:
T: 1 (888) 4PTGLAB (1-888-478-4522) (toll free in USA), or 1(312) 455-8498 (outside USA)
E: proteintech@ptglab.com
W: ptglab.com

This product is exclusively available under Proteintech Group brand and is not available to purchase from any other manufacturer.

Selected Validation Data



Various lysates were subjected to SDS PAGE followed by western blot with 85390-2-RR (FCER1G antibody) at dilution of 1:10000 incubated at room temperature for 1.5 hours. This data was developed using the same antibody clone with 85390-2-PBS in a different storage buffer formulation.



Biolayer interferometry (BLI) kinetic assays of 85390-2-RR against Human FCER1G were performed. The affinity constant is 1.16 nM.