

For Research Use Only

ITM2A Recombinant monoclonal antibody, PBS Only

Catalog Number: 85393-2-PBS



Basic Information

Catalog Number: 85393-2-PBS	GenBank Accession Number: BC040437	Purification Method: Protein A purification
Size: 100ug , Concentration: 1 mg/ml by Nanodrop;	GeneID (NCBI): 9452	CloneNo.: 242704D7
Source: Rabbit	UNIPROT ID: O43736	
Isotype: IgG	Full Name: integral membrane protein 2A	
	Calculated MW: 30 kDa	
	Observed MW: 30 kDa	

Applications

Tested Applications:
WB, Indirect ELISA

Species Specificity:
human, mouse, rat

Background Information

Integral membrane protein 2A (ITM2A) is a single-pass type II membrane protein belonging to a family, which is composed of at least two other members ITM2B and ITM2C. ITM2A can be induced during thymocyte selection and T cell activation. In early stages of differentiation ITM2A may be associated with an inhibition of the initiation of chondrogenesis. Catalog#14407-1-AP recognises two band of 30 kDa and 45-48 kDa, and the additional 45-48 kDa band may be due to glycosylation.

Storage

Storage:
Store at -80°C.

Storage Buffer:
PBS only, pH7.3

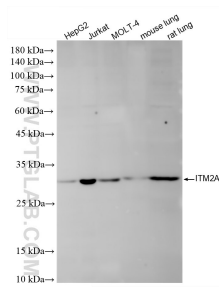
For technical support and original validation data for this product please contact:

T: 1 (888) 4PTGLAB (1-888-478-4522) (toll free in USA), or 1(312) 455-8498 (outside USA)

E: proteintech@ptglab.com
W: ptglab.com

This product is exclusively available under Proteintech Group brand and is not available to purchase from any other manufacturer.

Selected Validation Data



Various lysates were subjected to SDS PAGE followed by western blot with 85393-2-RR (ITM2A antibody) at dilution of 1:1000 incubated at room temperature for 1.5 hours. This data was developed using the same antibody clone with 85393-2-PBS in a different storage buffer formulation.