

For Research Use Only

ITM2A Recombinant monoclonal antibody

Catalog Number: 85393-2-RR



Basic Information

Catalog Number: 85393-2-RR	GenBank Accession Number: BC040437	Purification Method: Protein A purification
Size: 100ul , Concentration: 1000 µg/ml by Nanodrop;	GeneID (NCBI): 9452	CloneNo.: 242704D7
Source: Rabbit	UNIPROT ID: O43736	Recommended Dilutions: WB: 1:500-1:2000
Isotype: IgG	Full Name: integral membrane protein 2A	
	Calculated MW: 30 kDa	
	Observed MW: 30 kDa	

Applications

Tested Applications:
WB, ELISA

Species Specificity:
human, mouse, rat

Positive Controls:

WB : HepG2 cells, Jurkat cells, MOLT-4 cells, mouse lung tissue, rat lung tissue

Background Information

Integral membrane protein 2A (ITM2A) is a single-pass type II membrane protein belonging to a family, which is composed of at least two other members ITM2B and ITM2C. ITM2A can be induced during thymocyte selection and T cell activation. In early stages of differentiation ITM2A may be associated with an inhibition of the initiation of chondrogenesis.

Storage

Storage:
Store at -20°C. Stable for one year after shipment.

Storage Buffer:
PBS with 0.02% sodium azide and 50% glycerol, pH7.3

Aliquoting is unnecessary for -20°C storage

*** 20ul sizes contain 0.1% BSA

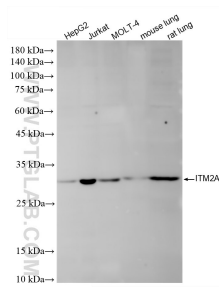
For technical support and original validation data for this product please contact:

T: 1 (888) 4PTGLAB (1-888-478-4522) (toll free in USA), or 1(312) 455-8498 (outside USA)

E: proteintech@ptglab.com
W: ptglab.com

This product is exclusively available under Proteintech Group brand and is not available to purchase from any other manufacturer.

Selected Validation Data



Various lysates were subjected to SDS PAGE followed by western blot with 85393-2-RR (ITM2A antibody) at dilution of 1:1000 incubated at room temperature for 1.5 hours.