

For Research Use Only

# DYNC1H1 Recombinant antibody, PBS Only (Capture/Detector)

Catalog Number: 85397-3-PBS



## Basic Information

<b>Catalog Number:</b> 85397-3-PBS	<b>GenBank Accession Number:</b> BC021297	<b>Purification Method:</b> Protein A purification
<b>Size:</b> 100ug , Concentration: 1 mg/ml by Nanodrop;	<b>GeneID (NCBI):</b> 1778	<b>CloneNo.:</b> 242706H1
<b>Source:</b> Rabbit	<b>UNIPROT ID:</b> Q14204	
<b>Isotype:</b> IgG	<b>Full Name:</b> dynein, cytoplasmic 1, heavy chain 1	
<b>Immunogen Catalog Number:</b> AG2999	<b>Calculated MW:</b> 4646 aa, 532 kDa	

## Applications

**Tested Applications:**  
Cytometric bead array, Sandwich ELISA, Indirect ELISA, Sample test

**Species Specificity:**  
human

## Product Information

85397-3-PBS targets DYNC1H1 as part of a matched antibody pair:

MP01928-1: 85397-1-PBS capture and 85397-3-PBS detection (validated in Cytometric bead array)

MP01928-2: 85397-3-PBS capture and 85397-2-PBS detection (validated in Cytometric bead array)

MP01928-3: 85397-5-PBS capture and 85397-3-PBS detection (validated in Sandwich ELISA)

Unconjugated rabbit recombinant monoclonal antibody in PBS only (BSA and azide free) storage buffer at a concentration of 1 mg/mL, ready for conjugation. Created using Proteintech's proprietary in-house recombinant technology. Recombinant production enables unrivalled batch-to-batch consistency, easy scale-up, and future security of supply.

This conjugation ready format makes antibodies ideal for use in many applications including: ELISAs, multiplex assays requiring matched pairs, mass cytometry, and multiplex imaging applications. Antibody use should be optimized by the end user for each application and assay.

## Storage

**Storage:**  
Store at -80°C.

**Storage Buffer:**  
PBS only, pH7.3

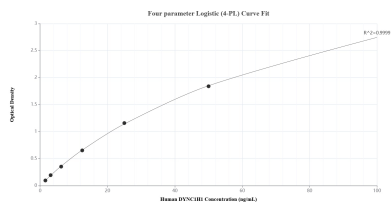
For technical support and original validation data for this product please contact:

T: 1 (888) 4PTGLAB (1-888-478-4522) (toll free in USA), or 1(312) 455-8498 (outside USA)

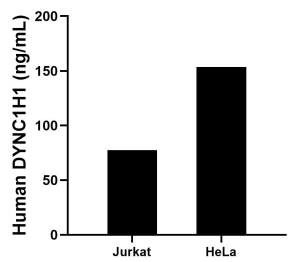
E: [proteintech@ptglab.com](mailto:proteintech@ptglab.com)  
W: [ptglab.com](http://ptglab.com)

This product is exclusively available under Proteintech Group brand and is not available to purchase from any other manufacturer.

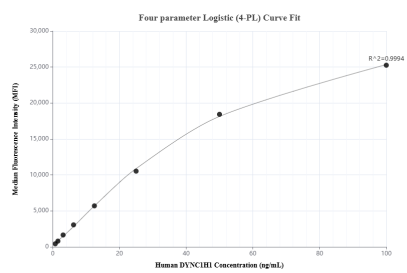
## Selected Validation Data



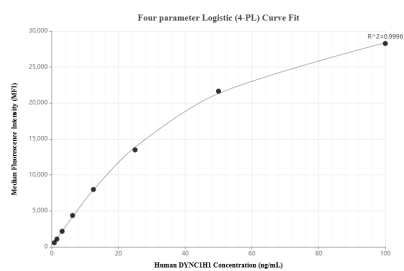
Sandwich ELISA standard curve of MP01928-3, Human DYNC1H1 Recombinant Matched Antibody Pair - PBS only. 85397-5-PBS was coated to a plate as the capture antibody and incubated with serial dilutions of standard Ag2999. 85397-3-PBS was HRP conjugated as the detection antibody. Range: 1.56-100 ng/mL



The mean DYNC1H1 concentration was determined to be 77.54 ng/mL in Jurkat cell extract based on a 1.80 mg/mL extract load and 153.64 ng/mL in HeLa cell extract based on a 1.80 mg/mL extract load.



Cytometric bead array standard curve of MP01928-2, DYNC1H1 Recombinant Matched Antibody Pair, PBS Only. Capture antibody: 85397-3-PBS. Detection antibody: 85397-2-PBS. Standard: Ag2999. Range: 0.781-100 ng/mL



Cytometric bead array standard curve of MP01928-1, DYNC1H1 Recombinant Matched Antibody Pair, PBS Only. Capture antibody: 85397-1-PBS. Detection antibody: 85397-3-PBS. Standard: Ag2999. Range: 0.781-100 ng/mL