

For Research Use Only

CLYBL Recombinant antibody, PBS Only

Catalog Number: 85399-4-PBS



Basic Information

Catalog Number:

85399-4-PBS

Size:

100ug , Concentration: 1 mg/ml by Nanodrop;

Source:

Rabbit

Isotype:

IgG

Immunogen Catalog Number:

AG11283

GenBank Accession Number:

BC034360

GeneID (NCBI):

171425

UNIPROT ID:

Q8NOX4

Full Name:

citrate lyase beta like

Calculated MW:

340 aa, 37 kDa

Observed MW:

30-40 kDa

Purification Method:

Protein A purification

CloneNo.:

242785F10

Applications

Tested Applications:

WB, Indirect ELISA

Species Specificity:

human, mouse, rat

Background Information

CLYBL, also named CLB, is a Mitochondrial citramalyl-CoA lyase indirectly involved in vitamin B12 metabolism (PubMed:29056341). It is a human mitochondrial enzyme of unknown function that is found in multiple eukaryotic taxa and conserved to bacteria. It acts as a beta-methylmalate synthase in vitro, by mediating the conversion of glyoxylate and propionyl-CoA to beta-methylmalate. There are two isoforms with MW 31-33 kDa and 35-37 kDa.

Storage

Storage:

Store at -80°C.

Storage Buffer:

PBS only, pH7.3

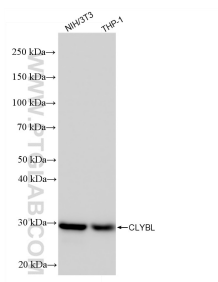
For technical support and original validation data for this product please contact:

T: 1 (888) 4PTGLAB (1-888-478-4522) (toll free in USA), or 1(312) 455-8498 (outside USA)

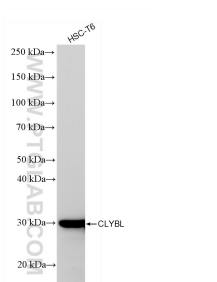
E: proteintech@ptglab.com
W: ptglab.com

This product is exclusively available under Proteintech Group brand and is not available to purchase from any other manufacturer.

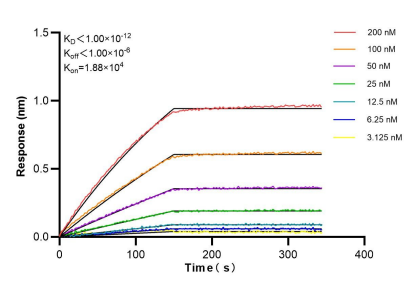
Selected Validation Data



Various lysates were subjected to SDS PAGE followed by western blot with 85399-4-RR (CLYBL antibody) at dilution of 1:10000 incubated at room temperature for 1.5 hours. This data was developed using the same antibody clone with 85399-4-PBS in a different storage buffer formulation.



HSC-T6 cells were subjected to SDS PAGE followed by western blot with 85399-4-RR (CLYBL antibody) at dilution of 1:10000 incubated at room temperature for 1.5 hours. This data was developed using the same antibody clone with 85399-4-PBS in a different storage buffer formulation.



Biolayer interferometry (BLI) kinetic assays of 85399-4-RR against Human CLYBL were performed. The affinity constant is below 1 pM.