

For Research Use Only

AQP2 Recombinant antibody, PBS Only (Capture)

Catalog Number: 85402-1-PBS



Basic Information

Catalog Number: 85402-1-PBS	GenBank Accession Number: NM_000486	Purification Method: Protein A purification
Size: 100ug , Concentration: 1 mg/ml by Nanodrop;	GeneID (NCBI): 359	CloneNo.: 242886B8
Source: Rabbit	UNIPROT ID: P41181	
Isotype: IgG	Full Name: aquaporin 2 (collecting duct)	
Immunogen Catalog Number: AG29931	Calculated MW: 29 kDa	
	Observed MW: 28-29, 35-38 kDa	

Applications

Tested Applications:
WB, Cytometric bead array, Indirect ELISA

Species Specificity:
human, mouse

Product Information

85402-1-PBS targets AQP2 as part of a matched antibody pair:

MP01925-1: 85402-1-PBS capture and 85402-2-PBS detection (validated in Cytometric bead array)

MP01925-2: 85402-1-PBS capture and 85402-3-PBS detection (validated in Cytometric bead array)

Unconjugated rabbit recombinant monoclonal antibody in PBS only (BSA and azide free) storage buffer at a concentration of 1 mg/mL, ready for conjugation. Created using Proteintech's proprietary in-house recombinant technology. Recombinant production enables unrivalled batch-to-batch consistency, easy scale-up, and future security of supply.

This conjugation ready format makes antibodies ideal for use in many applications including: ELISAs, multiplex assays requiring matched pairs, mass cytometry, and multiplex imaging applications. Antibody use should be optimized by the end user for each application and assay.

Background Information

AQP2 (Aquaporin2) is a water channel protein that is widely distributed among mammalian tissues and plays a major role in water homeostasis. AQP2 is mainly found in the apical cell membranes of the kidney's collecting duct cells and is critical for urinary concentration. AQP2 can be glycosylated and this antibody recognizes the 28-29 kDa non-glycosylated as well as the 35-40 kDa glycosylated forms of AQP2.

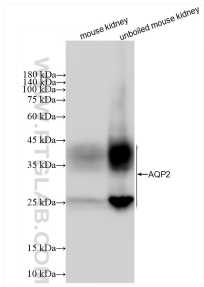
Storage

Storage:
Store at -80°C.
Storage Buffer:
PBS only, pH7.3

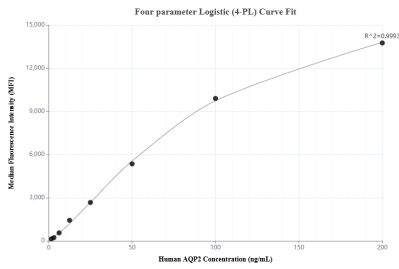
For technical support and original validation data for this product please contact:
T: 1 (888) 4PTGLAB (1-888-478-4522) (toll free in USA), or 1(312) 455-8498 (outside USA)
E: proteintech@ptglab.com
W: ptglab.com

This product is exclusively available under Proteintech Group brand and is not available to purchase from any other manufacturer.

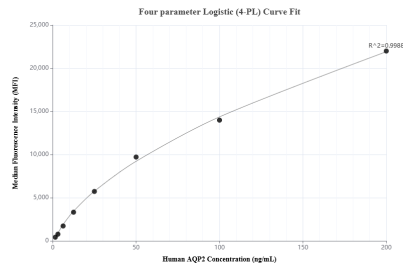
Selected Validation Data



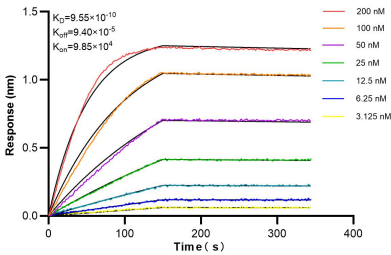
mouse kidney tissue were subjected to SDS PAGE followed by western blot with 85402-1-RR (AQP2 antibody) at dilution of 1:50000 incubated at room temperature for 1.5 hours. This data was developed using the same antibody clone with 85402-1-PBS in a different storage buffer formulation.



Cytometric bead array standard curve of MP01925-2, AQP2 Recombinant Matched Antibody Pair, PBS Only. Capture antibody: 85402-1-PBS. Detection antibody: 85402-3-PBS. Standard: Ag29931. Range: 1.563-200 ng/mL



Cytometric bead array standard curve of MP01925-1, AQP2 Recombinant Matched Antibody Pair, PBS Only. Capture antibody: 85402-1-PBS. Detection antibody: 85402-2-PBS. Standard: Ag29931. Range: 1.563-200 ng/mL



Bioluminescence resonance transfer (BLI) kinetic assays of 85402-1-RR against Human AQP2 were performed. The affinity constant is 0.955 nM.