

For Research Use Only

Cystatin SN/CST1 Recombinant antibody, PBS Only (Capture/Detector)

Catalog Number: 85403-1-PBS



Basic Information

Catalog Number:	85403-1-PBS	GenBank Accession Number:	BC021225	Purification Method:	Protein A purification
Size:	100ug, Concentration: 1 mg/ml by Nanodrop;	GeneID (NCBI):	1469	CloneNo.:	242888B3
Source:	Rabbit	UNIPROT ID:	P01037		
Isotype:	IgG	Full Name:	cystatin SN		
Immunogen Catalog Number:	AG8862	Calculated MW:	141 aa, 16 kDa		
		Observed MW:	14-16 kDa		

Applications

Tested Applications:
WB, Cytometric bead array, Sandwich ELISA, Indirect ELISA, Sample test

Species Specificity:
human

Product Information

85403-1-PBS targets Cystatin SN/CST1 as part of a matched antibody pair:

MP01926-1: 85403-3-PBS capture and 85403-1-PBS detection (validated in Cytometric bead array)

MP01926-2: 85403-1-PBS capture and 85403-2-PBS detection (validated in Cytometric bead array)

MP01926-3: 85403-4-PBS capture and 85403-1-PBS detection (validated in Sandwich ELISA)

Unconjugated rabbit recombinant monoclonal antibody in PBS only (BSA and azide free) storage buffer at a concentration of 1 mg/mL, ready for conjugation. Created using Proteintech's proprietary in-house recombinant technology. Recombinant production enables unrivalled batch-to-batch consistency, easy scale-up, and future security of supply.

This conjugation ready format makes antibodies ideal for use in many applications including: ELISAs, multiplex assays requiring matched pairs, mass cytometry, and multiplex imaging applications. Antibody use should be optimized by the end user for each application and assay.

Background Information

CST1, or cystatin SN, is a gene in humans that encodes a secreted protein belonging to the type 2 cystatin superfamily, which includes CST1, CST2, CST3, CST4, and CST5. These proteins are cysteine proteinase inhibitors found in various human fluids and secretions, where they appear to provide protective functions. CST1 is specifically found in saliva, tears, urine, and seminal fluid, and it plays a role in inhibiting the activity of cysteine proteases. CST1 has been implicated in various pathological processes, including tumor invasion and metastasis. Overexpression of CST1 has been observed in several types of cancer, such as lung, breast, colorectal, and gastric cancer, suggesting its role in the proliferation, invasion, and metastasis of these tumors.

Storage

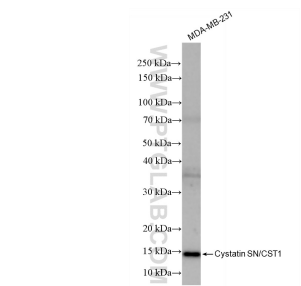
Storage:
Store at -80°C.

Storage Buffer:
PBS only, pH7.3

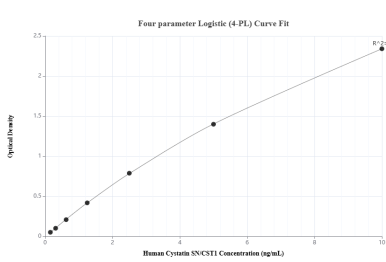
For technical support and original validation data for this product please contact:
T: 1 (888) 4PTGLAB (1-888-478-4522) (toll free in USA), or 1(312) 455-8498 (outside USA)
E: proteintech@ptglab.com
W: ptglab.com

This product is exclusively available under Proteintech Group brand and is not available to purchase from any other manufacturer.

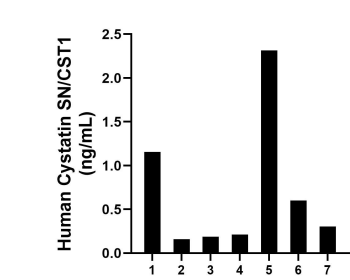
Selected Validation Data



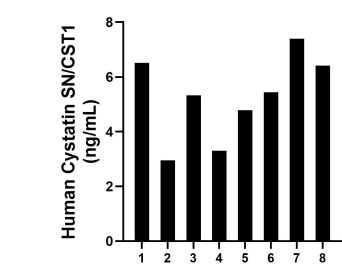
MDA-MB-231 cells were subjected to SDS PAGE followed by western blot with 85403-1-RR (CST1 antibody) at dilution of 1:10000 incubated at room temperature for 1.5 hours. This data was developed using the same antibody clone with 85403-1-PBS in a different storage buffer formulation.



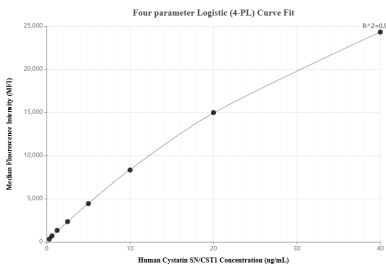
Sandwich ELISA standard curve of MP01926-3, Human Cystatin SN/CST1 Recombinant Matched Antibody Pair - PBS only. 85403-4-PBS was coated to a plate as the capture antibody and incubated with serial dilutions of standard Ag8862. 85403-1-PBS was HRP conjugated as the detection antibody. Range: 1.56-10 ng/ mL



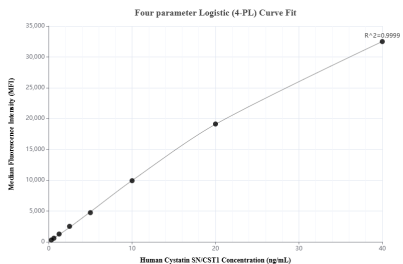
Urine of seven individual healthy human donors was measured. The human Cystatin SN/CST1 concentration of detected samples was determined to be 0.70 ng/mL with a range of 0.16 - 2.31 ng/ mL



Serum of eight individual healthy human donors was measured. The human Cystatin SN/CST1 concentration of detected samples was determined to be 5.27 ng/mL with a range of 2.95 - 7.40 ng/ mL



Cytometric bead array standard curve of MP01926-2, Cystatin SN/CST1 Recombinant Matched Antibody Pair, PBS Only. Capture antibody: 85403-1-PBS. Detection antibody: 85403-2-PBS. Standard: Ag8862. Range: 0.313-40 ng/ mL



Cytometric bead array standard curve of MP01926-1, Cystatin SN/CST1 Recombinant Matched Antibody Pair, PBS Only. Capture antibody: 85403-3-PBS. Detection antibody: 85403-1-PBS. Standard: Ag8862. Range: 0.313-40 ng/ mL