

For Research Use Only

Cystatin SN/CST1 Recombinant antibody

Catalog Number: 85403-1-RR



Basic Information

Catalog Number: 85403-1-RR	GenBank Accession Number: BC021225	Purification Method: Protein A purification
Size: 100ul , Concentration: 1000 µg/ml by Nanodrop;	GeneID (NCBI): 1469	CloneNo.: 242888B3
Source: Rabbit	UNIPROT ID: P01037	Recommended Dilutions: WB 1:5000-1:50000
Isotype: IgG	Full Name: cystatin SN	
Immunogen Catalog Number: AG8862	Calculated MW: 141 aa, 16 kDa	
	Observed MW: 14-16 kDa	

Applications

Tested Applications: WB, ELISA	Positive Controls: WB : MDA-MB-231 cells,
Species Specificity: human	

Background Information

CST1, or cystatin SN, is a gene in humans that encodes a secreted protein belonging to the type 2 cystatin superfamily, which includes CST1, CST2, CST3, CST4, and CST5. These proteins are cysteine proteinase inhibitors found in various human fluids and secretions, where they appear to provide protective functions. CST1 is specifically found in saliva, tears, urine, and seminal fluid, and it plays a role in inhibiting the activity of cysteine proteases. CST1 has been implicated in various pathological processes, including tumor invasion and metastasis. Overexpression of CST1 has been observed in several types of cancer, such as lung, breast, colorectal, and gastric cancer, suggesting its role in the proliferation, invasion, and metastasis of these tumors.

Storage

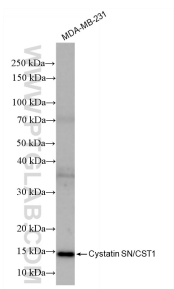
Storage:
Store at -20°C. Stable for one year after shipment.
Storage Buffer:
PBS with 0.02% sodium azide and 50% glycerol, pH7.3
Aliquoting is unnecessary for -20°C storage

*** 20ul sizes contain 0.1% BSA

For technical support and original validation data for this product please contact:
T: 1 (888) 4PTGLAB (1-888-478-4522) (toll free in USA), or 1(312) 455-8498 (outside USA)
E: proteintech@ptglab.com
W: ptglab.com

This product is exclusively available under Proteintech Group brand and is not available to purchase from any other manufacturer.

Selected Validation Data



MDA-MB-231 cells were subjected to SDS PAGE followed by western blot with 85403-1-RR (CST1 antibody) at dilution of 1:10000 incubated at room temperature for 1.5 hours.