

For Research Use Only

DNA ligase III/LIG3 Recombinant antibody, PBS Only (Detector)

Catalog Number: 85409-1-PBS



Basic Information

Catalog Number: 85409-1-PBS	GenBank Accession Number: BC068005	Purification Method: Protein A purification
Size: 100ug , Concentration: 1 mg/ml by Nanodrop;	GeneID (NCBI): 3980	CloneNo.: 242870E11
Source: Rabbit	UNIPROT ID: P49916	
Isotype: IgG	Full Name: ligase III, DNA, ATP-dependent	
Immunogen Catalog Number: AG24917	Calculated MW: 100-110 kDa	

Applications

Tested Applications:
Cytometric bead array, Sandwich ELISA, Indirect ELISA, Sample test

Species Specificity:
human

Product Information

85409-1-PBS targets DNA ligase III/LIG3 as part of a matched antibody pair:

MP01953-1: 85409-2-PBS capture and 85409-1-PBS detection (validated in Cytometric bead array)

MP01953-2: 85409-3-PBS capture and 85409-1-PBS detection (validated in Cytometric bead array)

MP01953-3: 85409-5-PBS capture and 85409-1-PBS detection (validated in Sandwich ELISA)

Unconjugated rabbit recombinant monoclonal antibody in PBS only (BSA and azide free) storage buffer at a concentration of 1 mg/mL, ready for conjugation. Created using Proteintech's proprietary in-house recombinant technology. Recombinant production enables unrivalled batch-to-batch consistency, easy scale-up, and future security of supply.

This conjugation ready format makes antibodies ideal for use in many applications including: ELISAs, multiplex assays requiring matched pairs, mass cytometry, and multiplex imaging applications. Antibody use should be optimized by the end user for each application and assay.

Storage

Storage:
Store at -80°C.

Storage Buffer:
PBS Only

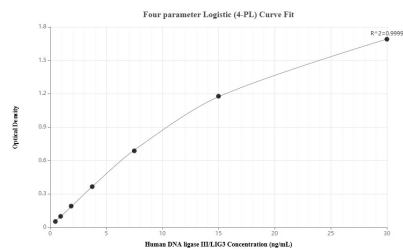
For technical support and original validation data for this product please contact:

T: 1 (888) 4PTGLAB (1-888-478-4522) (toll free in USA), or 1(312) 455-8498 (outside USA)

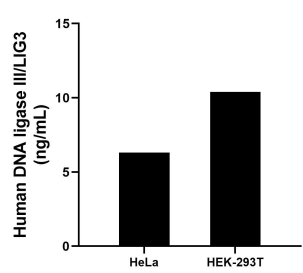
E: proteintech@ptglab.com
W: ptglab.com

This product is exclusively available under Proteintech Group brand and is not available to purchase from any other manufacturer.

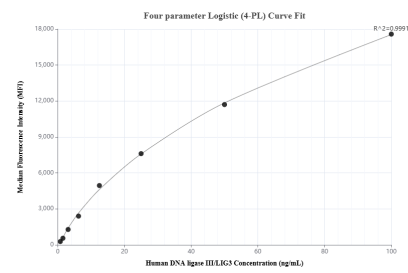
Selected Validation Data



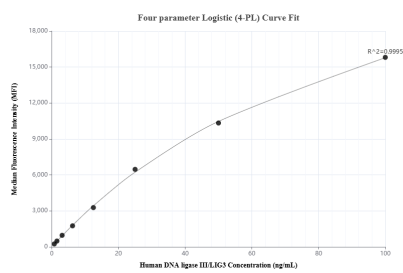
Sandwich ELISA standard curve of MP01953-3, Human DNA ligase III/LIG3 Recombinant Matched Antibody Pair - PBS only. 85409-5-PBS was coated to a plate as the capture antibody and incubated with serial dilutions of standard Ag24917. 85409-1-PBS was HRP conjugated as the detection antibody. Range: 0.47-30 ng/mL



The mean DNA ligase III/LIG3 concentration was determined to be 6.31 ng/mL in HeLa cell extract based on a 2.1 mg/mL extract load and 10.39 ng/mL in HEK-293T cell extract based on a 2.8 mg/mL extract load.



Cytometric bead array standard curve of MP01953-1, DNA ligase III/LIG3 Recombinant Matched Antibody Pair, PBS Only. Capture antibody: 85409-2-PBS. Detection antibody: 85409-1-PBS. Standard: Ag24917. Range: 0.781-100 ng/mL



Cytometric bead array standard curve of MP01953-2, DNA ligase III/LIG3 Recombinant Matched Antibody Pair, PBS Only. Capture antibody: 85409-3-PBS. Detection antibody: 85409-1-PBS. Standard: Ag24917. Range: 0.781-100 ng/mL