

For Research Use Only

PTGES2 Recombinant antibody, PBS Only

Catalog Number: 85419-4-PBS



Basic Information

Catalog Number: 85419-4-PBS	GenBank Accession Number: BC011613	Purification Method: Protein A purification
Size: 100ug , Concentration: 1 mg/ml by Nanodrop;	GeneID (NCBI): 80142	CloneNo.: 242930B4
Source: Rabbit	UNIPROT ID: Q9H7Z7	
Isotype: IgG	Full Name: prostaglandin E synthase 2	
Immunogen Catalog Number: AG1329	Calculated MW: 42 kDa	
	Observed MW: 30-35 kDa	

Applications

Tested Applications:
WB, IF/ICC, Indirect ELISA

Species Specificity:
human, mouse, rat, pig

Background Information

PTGES2 (Prostaglandin E synthase 2) catalyzes the conversion of unstable intermediate of prostaglandin E2 H2 (PGH2) into the more stable prostaglandin E2 (PGE2) form. Its predicted size is 42 kDa, but it was detected one band of 35 kDa in the prostate and two bands of 30 kDa, 50 kDa in liver by western blot (PMID:17566096). PTGES2 protein is a homotetramer, whereas two PTGES2 molecules each form a strongly interacting dimer(PMID:19268562).

Storage

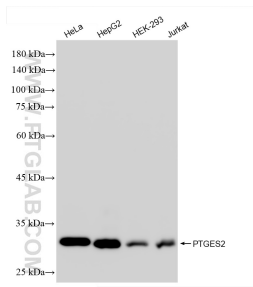
Storage:
Store at -80°C.

Storage Buffer:
PBS only

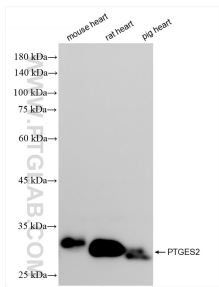
For technical support and original validation data for this product please contact:
T: 1 (888) 4PTGLAB (1-888-478-4522) (toll free in USA), or 1(312) 455-8498 (outside USA)
E: proteintech@ptglab.com
W: ptglab.com

This product is exclusively available under Proteintech Group brand and is not available to purchase from any other manufacturer.

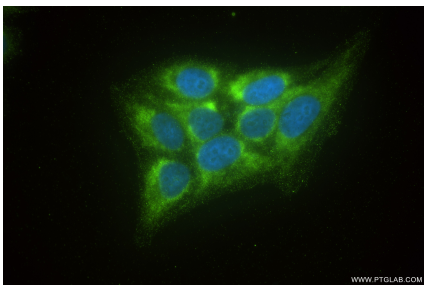
Selected Validation Data



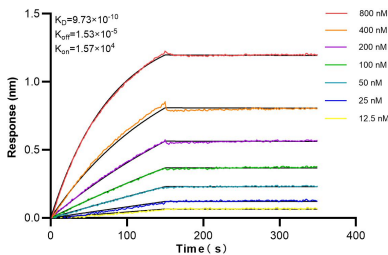
Various lysates were subjected to SDS PAGE followed by western blot with 85419-4-RR (PTGES2 antibody) at dilution of 1:10000 incubated at room temperature for 1.5 hours. This data was developed using the same antibody clone with 85419-4-PBS in a different storage buffer formulation.



Various lysates were subjected to SDS PAGE followed by western blot with 85419-4-RR (PTGES2 antibody) at dilution of 1:10000 incubated at room temperature for 1.5 hours. This data was developed using the same antibody clone with 85419-4-PBS in a different storage buffer formulation.



Immunofluorescent analysis of (-20°C Ethanol) fixed HepG2 cells using PTGES2 antibody (85419-4-RR, Clone: 242930B4) at dilution of 1:200 and CoraLite®488-Conjugated Goat Anti-Rabbit IgG(H+L) (SA00013-2). This data was developed using the same antibody clone with 85419-4-PBS in a different storage buffer formulation.



Biolayer interferometry (BLI) kinetic assays of 85419-4-RR against Human PTGES2 were performed. The affinity constant is 0.973 nM.