

For Research Use Only

PTGES2 Recombinant antibody

Catalog Number: 85419-4-RR



Basic Information

Catalog Number:

85419-4-RR

Size:

100ul , Concentration: 1000 µg/ml by Nanodrop;

Source:

Rabbit

Isotype:

IgG

Immunogen Catalog Number:

AG1329

GenBank Accession Number:

BC011613

GeneID (NCBI):

80142

UNIPROT ID:

Q9H7Z7

Full Name:

prostaglandin E synthase 2

Calculated MW:

42 kDa

Observed MW:

30-35 kDa

Purification Method:

Protein A purification

CloneNo.:

242930B4

Recommended Dilutions:

WB 1:5000-1:50000

IF/ICC 1:50-1:500

Applications

Tested Applications:

WB, IF/ICC, ELISA

Species Specificity:

human, mouse, rat, pig

Positive Controls:

WB : HeLa cells, mouse heart tissue, HepG2 cells, HEK-293 cells, Jurkat cells, rat heart tissue, pig heart tissue

IF/ICC : HepG2 cells, HeLa cells

Background Information

PTGES2 (Prostaglandin E synthase 2) catalyzes the conversion of unstable intermediate of prostaglandin E2 H2 (PGH2) into the more stable prostaglandin E2 (PGE2) form. Its predicted size is 42 kDa, but it was detected one band of 35 kDa in the prostate and two bands of 30 kDa, 50 kDa in liver by western blot (PMID:17566096). PTGES2 protein is a homotetramer, whereas two PTGES2 molecules each form a strongly interacting dimer (PMID:19268562).

Storage

Storage:

Store at -20°C. Stable for one year after shipment.

Storage Buffer:

PBS with 0.02% sodium azide and 50% glycerol

Aliquoting is unnecessary for -20°C storage

*** 20ul sizes contain 0.1% BSA

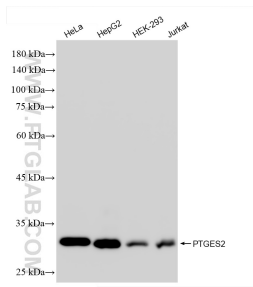
For technical support and original validation data for this product please contact:

T: 1 (888) 4PTGLAB (1-888-478-4522) (toll free in USA), or 1(312) 455-8498 (outside USA)

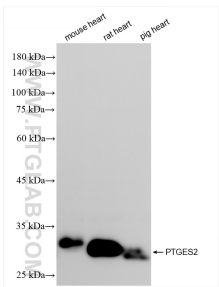
E: proteintech@ptglab.com
W: ptglab.com

This product is exclusively available under Proteintech Group brand and is not available to purchase from any other manufacturer.

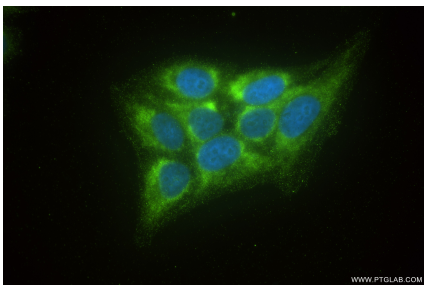
Selected Validation Data



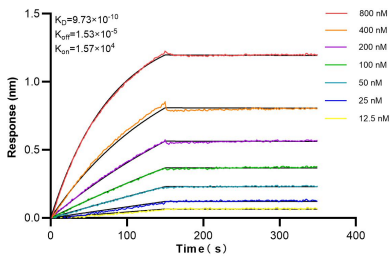
Various lysates were subjected to SDS PAGE followed by western blot with 85419-4-RR (PTGES2 antibody) at dilution of 1:10000 incubated at room temperature for 1.5 hours.



Various lysates were subjected to SDS PAGE followed by western blot with 85419-4-RR (PTGES2 antibody) at dilution of 1:10000 incubated at room temperature for 1.5 hours.



Immunofluorescent analysis of (-20°C Ethanol) fixed HepG2 cells using PTGES2 antibody (85419-4-RR, Clone: 242930B4) at dilution of 1:200 and CoraLite®488-Conjugated Goat Anti-Rabbit IgG(H+L) (SA00013-2).



Biolayer interferometry (BLI) kinetic assays of 85419-4-RR against Human PTGES2 were performed. The affinity constant is 0.973 nM.