

For Research Use Only

# Cytokeratin 6B Recombinant antibody, PBS Only

Catalog Number: 85423-2-PBS



## Basic Information

<b>Catalog Number:</b> 85423-2-PBS	<b>GenBank Accession Number:</b> BC034535	<b>Purification Method:</b> Protein A purification
<b>Size:</b> 100ug , Concentration: 1 mg/ml by Nanodrop;	<b>GeneID (NCBI):</b> 3854	<b>CloneNo.:</b> 242874F9
<b>Source:</b> Rabbit	<b>UNIPROT ID:</b> P04259	
<b>Isotype:</b> IgG	<b>Full Name:</b> keratin 6B	
<b>Immunogen Catalog Number:</b> AG11288	<b>Calculated MW:</b> 564 aa, 60 kDa	
	<b>Observed MW:</b> 60 kDa	

## Applications

**Tested Applications:**  
WB, Indirect ELISA

**Species Specificity:**  
human, mouse, rat

## Background Information

Cytokeratin 6B (CK6B) is a type of intermediate filament protein primarily expressed in certain epithelial cells. Cytokeratin 6B consists of a central  $\alpha$ -helical rod domain flanked by non-helical head and tail domains, which is a common structural feature of cytokeratins. CK6B is mainly expressed in the basal and suprabasal layers of stratified epithelia, such as the oral mucosa, esophagus, and conjunctiva. It is also found in some specialized epithelial cells like the hair follicle outer root sheath and the nail matrix. CK6B can serve as a diagnostic marker for certain pathological conditions. Its expression pattern can be used to distinguish between different types of epithelial tumors or to identify specific epithelial cell populations in histopathological studies.

## Storage

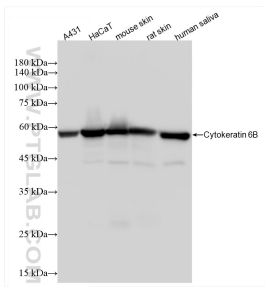
**Storage:**  
Store at -80°C.

**Storage Buffer:**  
PBS Only

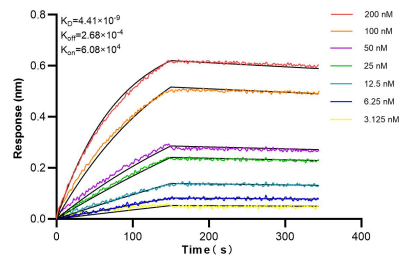
For technical support and original validation data for this product please contact:  
T: 1 (888) 4PTGLAB (1-888-478-4522) (toll free in USA), or 1(312) 455-8498 (outside USA)  
E: [proteintech@ptglab.com](mailto:proteintech@ptglab.com)  
W: [ptglab.com](http://ptglab.com)

This product is exclusively available under Proteintech Group brand and is not available to purchase from any other manufacturer.

## Selected Validation Data



Various lysates were subjected to SDS PAGE followed by western blot with 85423-2-RR (KRT6B antibody) at dilution of 1:10000 incubated at room temperature for 1.5 hours. This data was developed using the same antibody clone with 85423-2-PBS in a different storage buffer formulation.



Biolayer interferometry (BLI) kinetic assays of 85423-2-RR against Human Cytokeratin 6B were performed. The affinity constant is 4.41 nM.