

For Research Use Only

Cytokeratin 6B Recombinant antibody

Catalog Number: 85423-2-RR



Basic Information

Catalog Number: 85423-2-RR	GenBank Accession Number: BC034535	Purification Method: Protein A purification
Size: 100ul , Concentration: 1000 µg/ml by Nanodrop;	GeneID (NCBI): 3854	CloneNo.: 242874F9
Source: Rabbit	UNIPROT ID: P04259	Recommended Dilutions: WB 1:5000-1:50000
Isotype: IgG	Full Name: keratin 6B	
Immunogen Catalog Number: AG11288	Calculated MW: 564 aa, 60 kDa	
	Observed MW: 60 kDa	

Applications

Tested Applications: WB, ELISA	Positive Controls: WB : A431 cells,
Species Specificity: human, mouse, rat	

Background Information

Cytokeratin 6B (CK6B) is a type of intermediate filament protein primarily expressed in certain epithelial cells. Cytokeratin 6B consists of a central α -helical rod domain flanked by non-helical head and tail domains, which is a common structural feature of cytokeratins. CK6B is mainly expressed in the basal and suprabasal layers of stratified epithelia, such as the oral mucosa, esophagus, and conjunctiva. It is also found in some specialized epithelial cells like the hair follicle outer root sheath and the nail matrix. CK6B can serve as a diagnostic marker for certain pathological conditions. Its expression pattern can be used to distinguish between different types of epithelial tumors or to identify specific epithelial cell populations in histopathological studies.

Storage

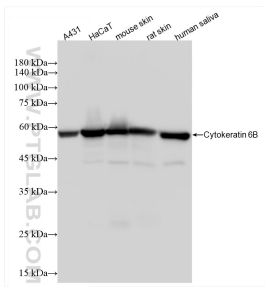
Storage:
Store at -20°C. Stable for one year after shipment.
Storage Buffer:
PBS with 0.02% sodium azide and 50% glycerol pH 7.3.
Aliquoting is unnecessary for -20°C storage

*** 20ul sizes contain 0.1% BSA

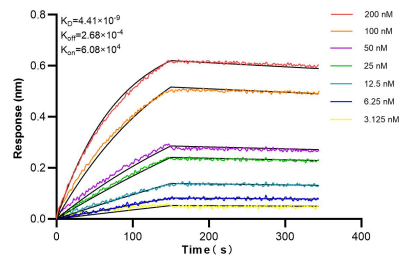
For technical support and original validation data for this product please contact:
T: 1 (888) 4PTGLAB (1-888-478-4522) (toll free in USA), or 1(312) 455-8498 (outside USA)
E: proteintech@ptglab.com
W: ptglab.com

This product is exclusively available under Proteintech Group brand and is not available to purchase from any other manufacturer.

Selected Validation Data



Various lysates were subjected to SDS PAGE followed by western blot with 85423-2-RR (KRT6B antibody) at dilution of 1:10000 incubated at room temperature for 1.5 hours.



Biolayer interferometry (BLI) kinetic assays of 85423-2-RR against Human Cytokeratin 6B were performed. The affinity constant is 4.41 nM.